

Our Pledge of Ethics

*As a member of the Elizabeth Public Schools Professional Learning Community,
I will treat people as I wish to be treated. To do that I pledge to:*

- Understand that the school community is a “special place”
- Listen respectfully when someone else is speaking by paying close attention and not interrupting
- Speak in a calm voice and use proper language
- Dress appropriately for teaching and learning
- Inspire the best in myself and others by celebrating successes and learning from mistakes
- Care about others by demonstrating acts of kindness
- Be a life-long learner by taking every opportunity to learn from others

Achieve Excellence.



URBAN SCHOOL DISTRICT
IN NEW JERSEY!

NATIONALLY RECOGNIZED
HIGH SCHOOLS!



NATIONAL
BLUE RIBBON SCHOOLS!



ELIZABETH PUBLIC SCHOOLS



ELIZABETH PUBLIC SCHOOLS

The 2013-2014 Budget of the Elizabeth Board of Education

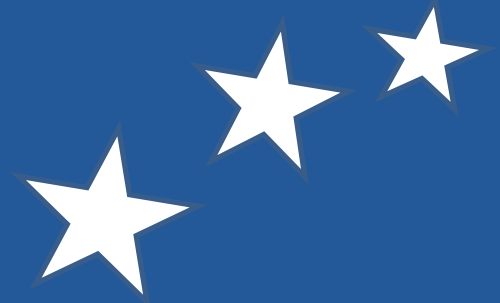
Achieving Excellence For Our Children
Presenting a Responsible Budget for the Taxpayers of Elizabeth

Our Elizabeth Board of Education

*For all the community, all over Elizabeth,
Working hard to Achieve Excellence.*



We're Moving Forward...



By supporting and enhancing the programs that continue to make us
'The Number One Urban School District in the State of New Jersey'

Our Vision

The Elizabeth Public Schools
will be one of the best school systems
in America

Achieve Excellence.

Our Mission

The Elizabeth Public Schools will provide
excellent educational experiences and services
to inspire every student
to think, to learn, to achieve, and to care

Achieve Excellence.

Our Core Beliefs

1. We believe all students can learn and achieve at high levels
We will ensure that all students graduate prepared to pursue postsecondary education
2. We believe that teachers make a positive difference in student achievement
We will recruit, develop, retain, and celebrate world-class teachers
3. We believe that effective leaders produce excellent results
We will recruit, develop, retain, and reward results-driven leaders
4. We believe that a high-performing team produces a legacy of enduring greatness
We will build a high-performing team that achieves excellence

Achieve Excellence.

We're Moving Forward...

By Following Our 3L's: Our Guiding Principles

Love

*Laser-like Focus on Teaching and Learning
Leadership*



URBAN SCHOOL DISTRICT
IN NEW JERSEY!

Love

Love is a driving force for all that we do. It is the foundation of our Pledge of Ethics. We have to love what we do, every second, of every minute, of every hour, of every day, of every week, of every month, of every year. The reason we are here must revolve around love of the school district we work for and the education we provide to every student, in every classroom, everyday.

Our 3 L's - Love, Laser-like Focus and Leadership

Laser-like Focus on Teaching and Learning

We need a laser-like focus on teaching and learning that helps us increase student achievement, eliminates the achievement gap, and prepares students for post-secondary education and high-paying employment.

Our 3 L's - Love, Laser-like Focus and Leadership

Leadership

“Everything rises and falls on leadership” (Maxwell, 1998).

As an organization, the phrase “no excuses ... just excellent results” is part of our district’s culture. For us to realize our vision of becoming one of the best school systems in America, there will be moments when we will be challenged. We need to ask ourselves whether we will find reasons to succeed or reasons to fail. Leadership is about taking a stand and never being fearful about what we are doing when we know it is right for our students.

Our 3 L’s - Love, Laser-like Focus and Leadership

The 2013-2014 Budget Presentation

Our Financials

Our Drivers

Our Programs and Services

Our Accomplishments

We're Moving Forward...



ELIZABETH PUBLIC SCHOOLS

Our Financials

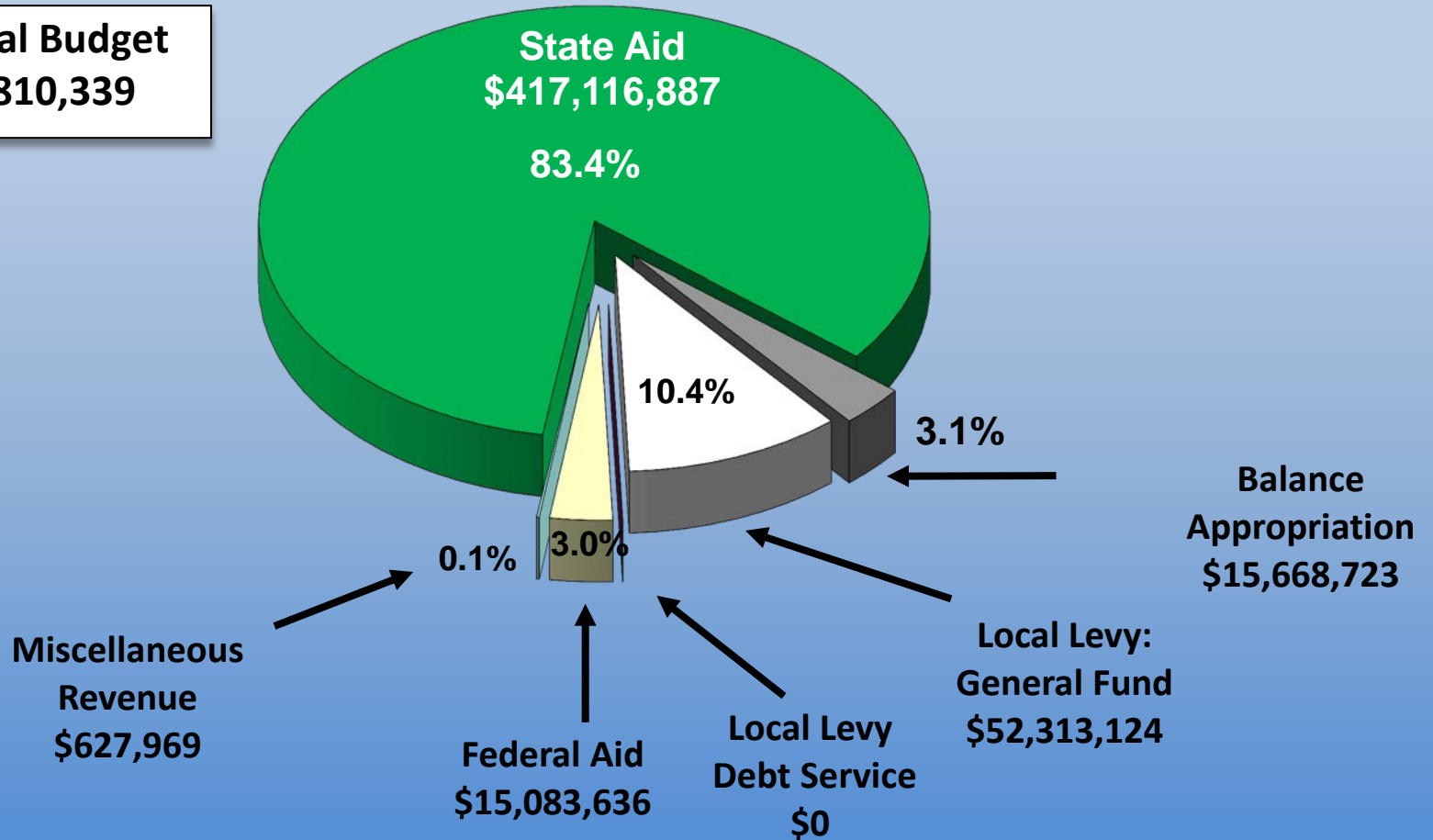
We're Moving Forward...



ELIZABETH PUBLIC SCHOOLS

ELIZABETH BOARD OF EDUCATION 2013-2014 BUDGET REVENUE

**Our Total Budget
\$500,810,339**



Debt Service

**The Elizabeth Board of Education
is proud to announce
that our school district,
unlike many other government agencies has**

NO DEBT SERVICE!

***Incurring debt impacts the rate of tax
that is charged to the local taxpayers.***

Additional aid for the new school year has been reported:

ELIZABETH NEWS

The New Jersey Department of Education has provided aid figures for districts all over the State of New Jersey.

Elizabeth, received the largest increase.

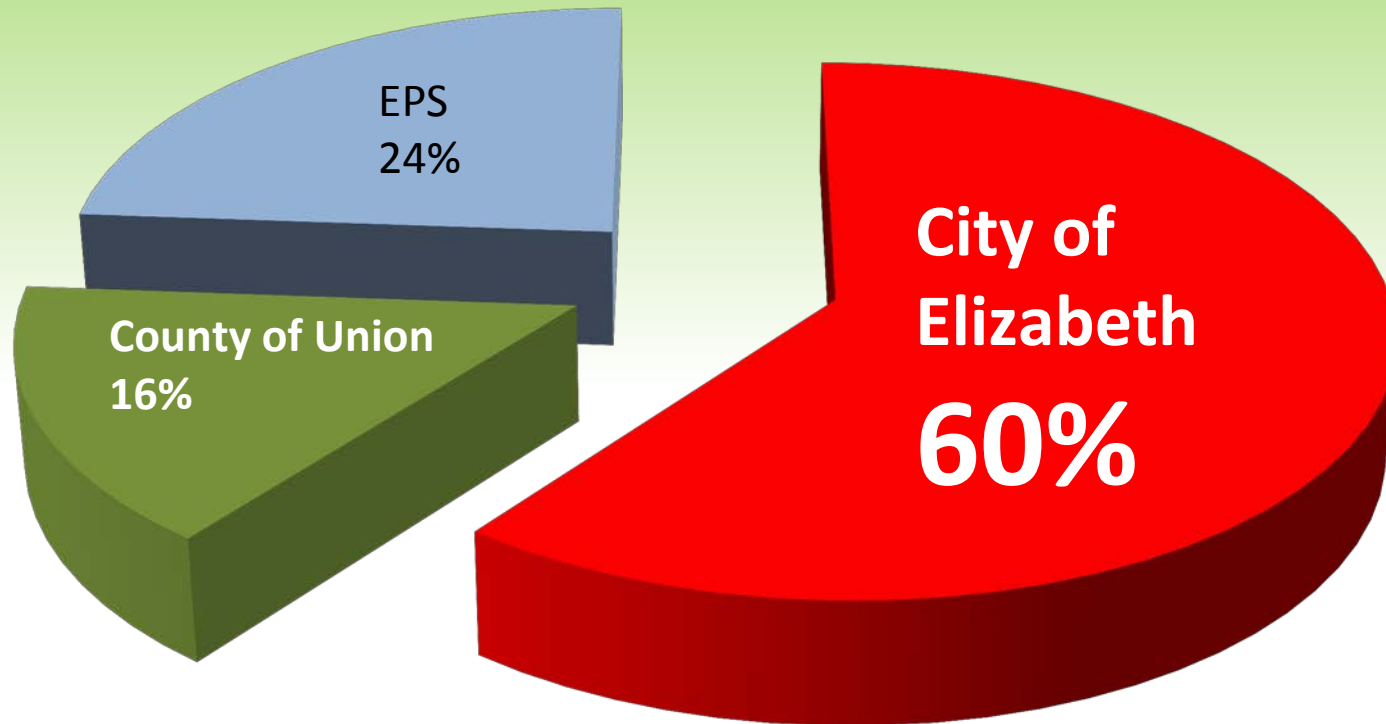


STATE OF NEW JERSEY
DEPARTMENT OF EDUCATION

Total State Aid for 2013-2014
\$417,116,887

The State of New Jersey has provided \$7,559,176, increase over last year for the Elizabeth Board of Education budget.

Where do your tax dollars go?



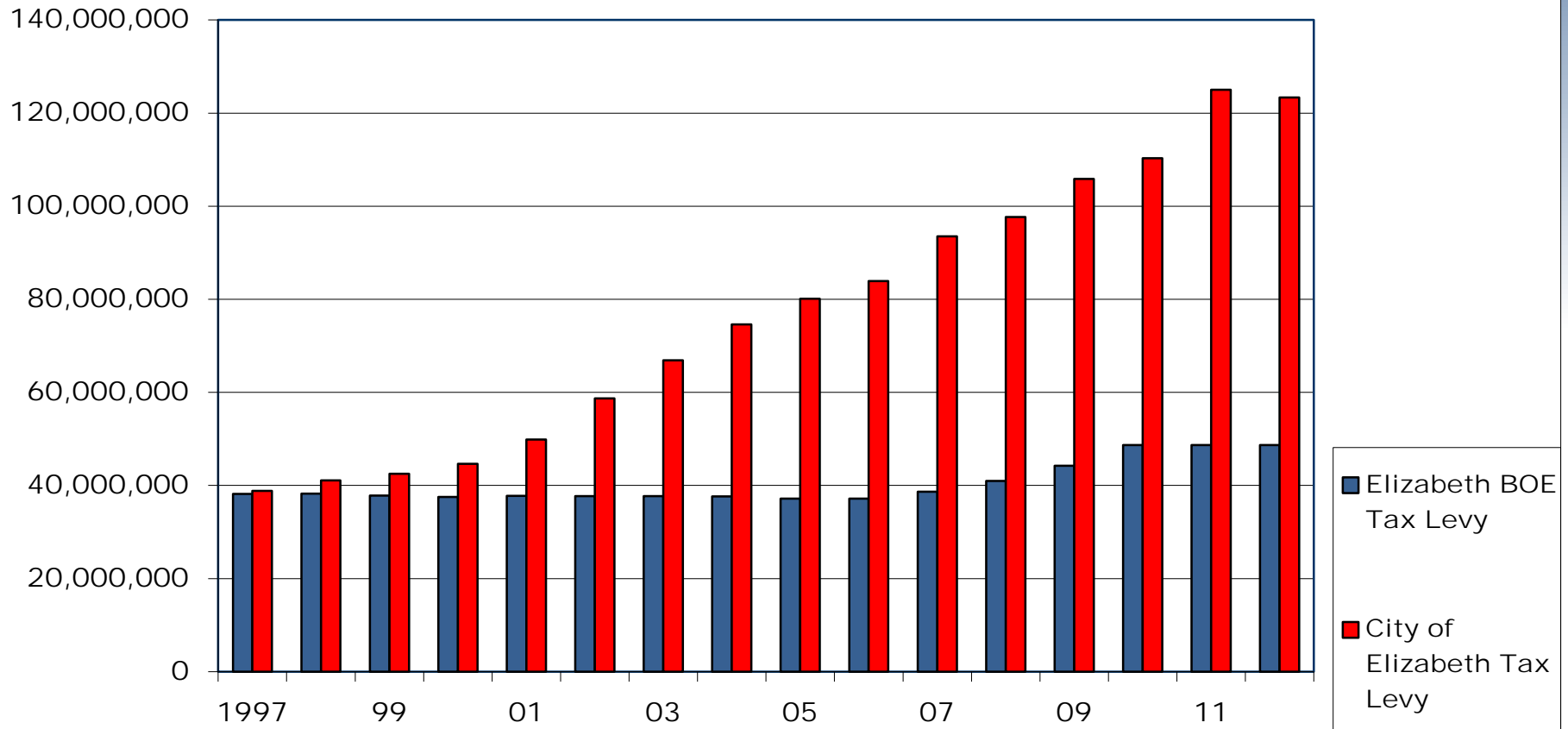
Distribution of Tax Dollars for Elizabeth Taxpayers

for 2012-2013 fiscal year

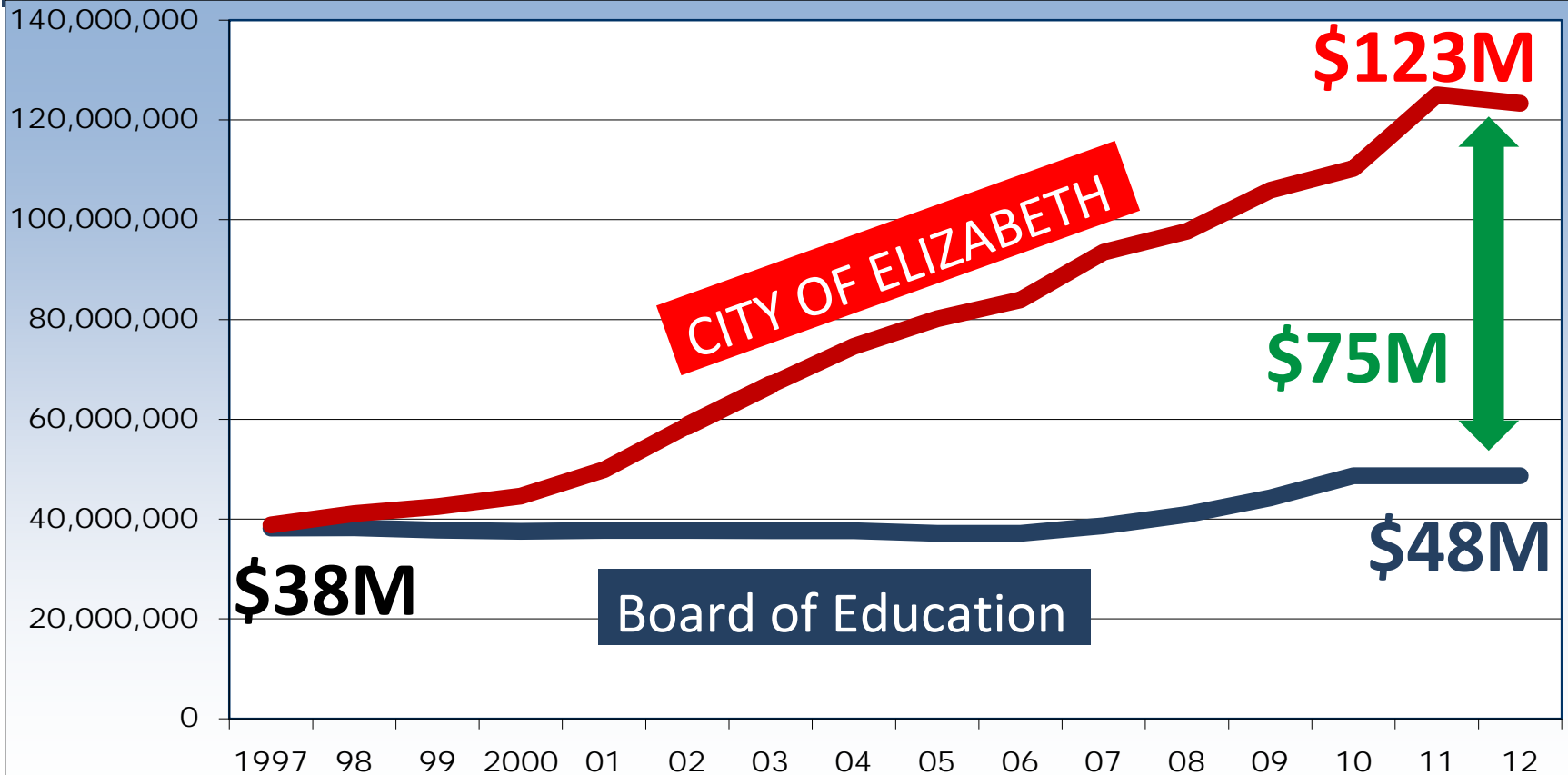
Comparing the City of Elizabeth TAX LEVY To the Elizabeth Board of Education

Year	City of Elizabeth - <i>for city services</i>	Elizabeth Board of Education - <i>for our children</i>
1997	38,822,058	38,193,363
1998	41,114,200	38,272,711
1999	42,538,930	37,822,517
2000	44,635,591	37,534,260
2001	49,889,627	37,756,083
2002	58,708,906	37,720,199
2003	66,918,447	37,693,205
2004	74,624,035	37,663,357
2005	80,148,511	37,165,104
2006	83,939,812	37,165,104
2007	93,509,578	38,651,708
2008	97,688,387	40,970,810
2009	105,887,763	44,248,475
2010	110,291,833	48,673,323
2011	125,038,253	48,673,323
2012	123,328,515	48,673,323

Comparing the City of Elizabeth TAX LEVY To the Elizabeth Board of Education



Comparing the City of Elizabeth TAX LEVY To the Elizabeth Board of Education *Over a 16 Year Period - from 1997-2012*



The City of Elizabeth Tax Levy increased by \$85 Million during the period of 1997-2012
The Board of Education Tax Levy increased by \$10 Million during the period of 1997 -2012
The difference over time between the City of Elizabeth & the Board of Education in 2012 is \$75 Million

The City of Elizabeth vs. The Elizabeth Board of Education Tax Levy Change Over 16 Years

The dollar increase
in the tax levy
over 16 years

\$85 M

**City of
Elizabeth**

\$10 M

**Elizabeth Board
of Education**

Over 16 years, City of Elizabeth increased their tax levy amount by 85 Million Dollars as compared to the Elizabeth Board of Education which increased only 10 Million Dollars over the same period.

*Source Union County Abstract of Ratables

A historical summary over the last 16 years

The City of Elizabeth vs. The Elizabeth Board of Education

Percentage Increase Over 16 Years

The percentage increase
in the tax levy over 16 years

218 % increase
for the
City of Elizabeth

Only 27 %
increase for the
Elizabeth Board
of Education

Annualized over a 16 year
period, the effective rate for
the City of Elizabeth is

14.5 % per year

*Annualized over a 16 year
period, the effective rate for
the Board of Education is
1.8 % per year*

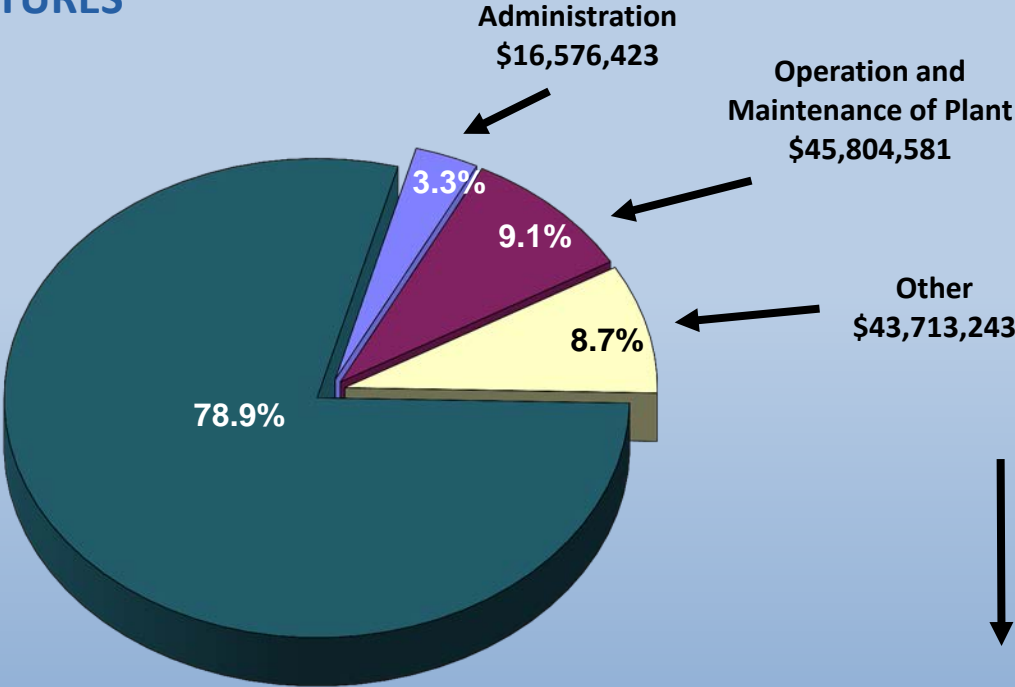
A historical summary over the last 16 years

**ELIZABETH BOARD OF EDUCATION
2013-2014 BUDGET EXPENDITURES**

**Our Total Budget
\$500,810,339**

**Instruction,
Contribution to Whole
School Reform, and
Other Programs for
Our Students
\$394,716,092**

Regular	24,614,034
Support Services	27,649,455
Special Education	27,713,416
Co-curricular Athletics	3,153,081
State and Federal Programs	60,846,605
Contribution to Whole School Reform	250,609,584
Special Schools	129,917



Community Services	318,864
Employee Benefits	24,054,768
Transportation	16,835,211
Capital Outlay	2,504,400
Debt Service	0

ELIZABETH BOARD OF EDUCATION

2013-2014 BUDGET

PER PUPIL COSTS

Per Pupil Costs are calculated using total current expense exclusive of tuition, transportation, and judgments against the District, plus the restricted entitlement aides under SFRA.

The groupings are consistent with the State Department of Education's Comparative Spending Guide published by the State Department of Education.

Equipment Costs
Community
Services and
Special Schools

Other
\$78

Cleaning, repair,
maintenance services and
supplies
Utilities, insurance,
custodial, security,
maintenance salaries and
benefits

Operations and
Maintenance of Plant
\$2,396

Athletics
Cocurricular
Extracurricular

Activities \$176

Support Services
\$2,620

Attendance
Health Services
Guidance Services ,Child Study
Teams,
Educational
Media/Library
Services,
Professional Development

Administration
\$1,470

Central Administration
School Administration
Business Services
Human Resources
Telephone & Postage

Comparative Per Pupil Cost
\$17,444

Classroom Instruction
\$10,704

Teacher & Aide Salaries and
Benefits Supplies &
Textbooks

The 2013-2014 Budget Presentation

School Based Budgets comparison

- 2012 \$233,808,688
- 2013 \$250,609,584

That represents
an increase of \$16,800,896

Achieve Excellence.

Resources per pupil	<i>This year's budget 2013/2014</i>	<i>Last year's budget 2012/2013</i>	<i>increase decrease</i>
Classroom Instruction	10,704	10,145	559
Extra Curricular	176	155	21
Support	2,620	2,967	-347
Administrative	1,470	1,471	-1
Legal	84	86	-2
Operations and Maintenance	2,396	2,729	-333
Equipment	28	81	-53

The 2013-2014 Budget Presentation

Central Administration Budget comparison

- 2012 \$191,617,626
- 2013 \$189,354,150

That represents
a decrease of \$2,263,476

Achieve Excellence.

Good government at work!

Total Administrative Salaries and Benefits

Elizabeth's *cost per student*

\$1,470

State of NJ *regional cost per student*

\$1,848

Elizabeth Public Schools spend less on administrative costs and benefits when compared to the State of New Jersey regional cost!



Helder Mendonca, CPA
Robert G. D'Uva, CPA
Christopher Reed, CPA
Amedeo Luon
João P. Sant

...Your Business, Our Pa

INDEPENDENT AUDITORS' REPORT

Honorable President and Members
Of the Board of Education
City of Elizabeth
County of Union
Elizabeth, New Jersey

We have audited the accompanying financial statements of the governmental activities, the business-type activities, each major fund and the aggregate remaining fund information of the City of Elizabeth School District, County of Union, New Jersey as of and for the fiscal year ended June 30, 2012, which collectively comprise the District's basic financial statements as listed in the table of contents. These financial statements are the responsibility of the City of Elizabeth School District's management. Our responsibility is to express an opinion on these financial statements based on our audit.

We conducted our audit in accordance with auditing standards generally accepted in the United States of America, the standards applicable to financial audits contained in *Government Auditing Standards*, issued by the Comptroller General of the United States; and audit requirements as prescribed by the Division of Finance and Regulatory Compliance, Department of Education, State of New Jersey. Those standards require that we plan and perform the audit to obtain reasonable assurance about whether the basic financial statements are free of material misstatement. An audit includes examining, on a test basis, evidence supporting the amounts and financial statements. An audit also includes assessing the accounting principles management, as well as evaluating the overall basic

Our Accomplishments:
The Comprehensive Annual Financial Report (CAFR) declares:

Unqualified Independent Auditors' opinion on the Comprehensive Annual Financial Report for the year ended June 30, 2012

Achieve Excellence.



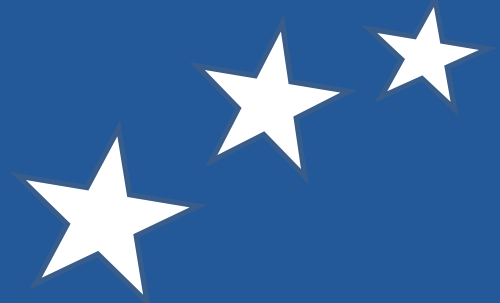
ELIZABETH PUBLIC SCHOOLS

Our Elizabeth Board of Education

*For all the community, all over Elizabeth,
Working hard to Achieve Excellence.*



We're Moving Forward...



By supporting and enhancing the programs that continue to make us
'The Number One Urban School District in the State of New Jersey'



ELIZABETH PUBLIC SCHOOLS

The 2013-2014 Budget of the Elizabeth Board of Education

Achieving Excellence For Our Children

Presenting a Responsible Budget for the Taxpayers of Elizabeth