



# 2022-2023 Budget Presentation



presented by  
**Olga Hugelmeyer**  
Superintendent of Schools

**May 5, 2022**

# *Our* ELIZABETH BOARD OF EDUCATION



Rosa Moreno-Ortega  
President



Iliana Chevres  
Vice President



Nathalie Alcaide-Hernandez



Diane Barbosa



Maria Z. Carvalho



Charlene Bathelus Dorgely



Jerry D. Jacobs



Stanley Neron



Stephanie Goncalves Pestana

# OUR SCHOOL SYSTEM

ELIZABETH PUBLIC SCHOOLS

**28,088**  
**STUDENTS**



**37 SCHOOLS**

**3** EARLY CHILDHOOD  
CENTERS

**20** NEIGHBORHOOD  
SCHOOLS

**6** MAGNET  
SCHOOLS

**8** HIGH  
SCHOOLS

**2<sup>nd</sup> Largest District** in the State of New Jersey

## Student Demographic



WHITE  
7.4%

OTHER  
0.2%

ASIAN  
1.7%

BLACK  
16.2%

HISPANIC  
74.5%

Male **50.30%**  
Female **49.70%**

## Student Profile

**64.7%** General Education  
**23.6%** ELL  
**10.00%** Special Education  
**1.8%** Special Ed & ELL  
**.79%** Homeless



**ENROLLMENT** + **5,019 Students**  
IN PAST 11 YEARS

2011-2012 School Year – 23,391 students  
2021-2022 School Year – 28,088 students



**GRADUATION RATE – 82.0%**

EPS record 1,629 students graduated as members of the Class of 2021



**79.3% FREE/REDUCED LUNCH**



**WORKFORCE**

2021-2022 School Year  
4,198 team members



**How do we define  
Every Child  
Achieving  
Excellence?**



# ***We Believe...***

... ALL students can learn and achieve at high levels regardless of race, ethnicity, culture, neighborhood, household income or home language.

... Teachers make a positive difference in student achievement. Teachers will prepare ALL students for success in college, career, and our technological global society.

... Effective leaders demonstrate unwavering commitment to high levels of achievement for ALL students.

... Parents and caregivers are both valued partners and active participants in their children's learning. A shared sense of mutual responsibility for learning is the foundation for family involvement to ensure student success.

... Every member of the Elizabeth Public Schools team has a responsibility in producing and supporting high levels of achievement for ALL students.

# Budget Considerations

It shall be carefully organized and planned to provide adequate accounting for each program expenditure, understanding of the financial needs of anticipated program developments, and be within the financial limitations of the district, taking into consideration the statutory limits on the tax levy...



**ELIZABETH PUBLIC SCHOOLS**  
*Every Child, Achieving Excellence*

## **Prior Years' Spending Data**

The administrative cabinet analyzes prior years' spending as well as considers current year's needs.

## **Enrollment/Data Projections**

Enrollment reports are examined to develop trend line reports and current registration projections are considered to determine grade/course section needs

## **School-based Needs**

School administrators work with building level staff to determine the needs for the upcoming year.

## **Technology Infrastructure**

EPS is mapping infrastructure components to increase accessibility and bandwidth.

## **Staffing**

Based on the strategic planning goals, student needs, enrollment study, bargaining agreements, and anticipated vacancies, staffing decisions are made.

## **Historical Tax Levy Data**

Data is analyzed to examine the previous 5 years of historical tax levy data, tax certioraris and tax growth.

## **Strategic Goals**

The district strategic plan is used to determine long and short term budgetary goals.

## **Facilities**

Planning for future capital improvement to address aging infrastructure, upgrades to facilities to meet students' needs, and equipment replacement.

Gov. Phil Murphy's administration proposed \$9.2 billion for New Jersey pre-K to 12 schools for the Fiscal Year 2023 budget, Elizabeth Public Schools received an 8.30% increase





- Opening of Bollwage Finance Academy  
9<sup>th</sup> Grade Annex – Benedictine Academy  
9<sup>th</sup> Grade – 150 students  
Expansion of Point of Entry Program  
Expansion of Autism Program  
**\$1,532,550**



- Expansion of JVI Stem Academy  
11<sup>th</sup> grade – additional 80 students  
**\$1,321,000**



- Opening of School 20 Annex – Our Lady of Fatima – additional 10 classrooms  
Grades 4 & 5 – 200 students  
**\$488,100**

- Opening of New School 3 Annex - Our Lady of Guadalupe – additional 16 classrooms  
Grades 3, 4 & 5 – 350 students  
**\$4,346,000**

- 108 New Certified and Non-Certified Positions  
**\$9,488,000**



# CAPITAL RESERVE FUNDING PROJECTS

## 2022-2023

Remodeling of bathrooms at the  
Dwyer Technology Academy/Halsey Health &  
Public Safety Academy Main Complex

- 36 bathrooms
- New fixtures
- Tiling/walls
- Stalls
- Lighting

**\$1,5000,000**



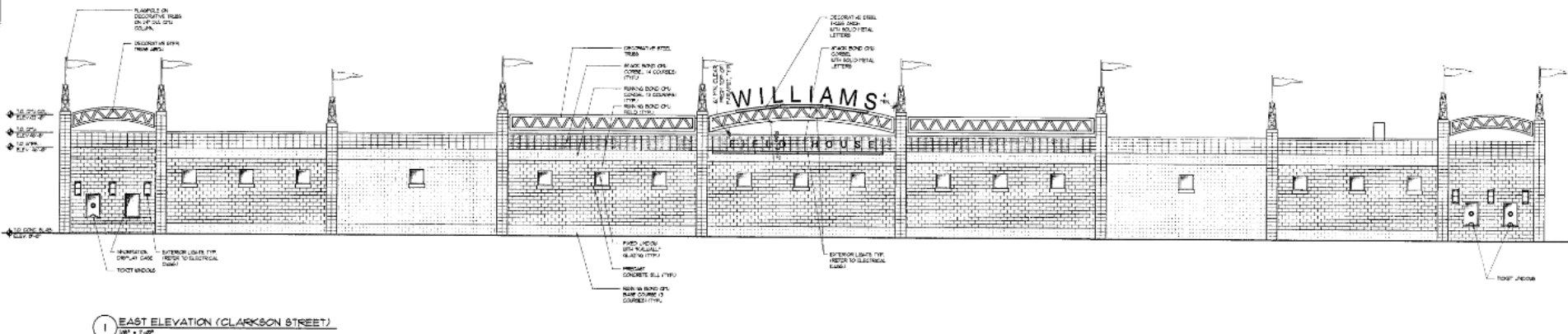
# CAPITAL RESERVE FUNDING PROJECTS

## 2022-2023

# Construction of the new Fieldhouse complex (behind Williams Field bleachers)

- 
- 9,000 sq ft building
  - Boys/girls locker rooms
  - Weight room
  - Trainers/treat room
  - Film/meeting room
  - Homework room

**\$1,750,000**







# 2022-2023 Budget Presentation



**OUR FINANCIALS  
OUR DRIVERS  
OUR PROGRAMS AND SERVICES**



**2022-2023**  
**Budget**  
**Presentation**

# OUR FINANCIALS



**2022-2023**  
**Budget**  
**Presentation**

# **OUR FINANCIAL DATA**

**Harold E. Kennedy, Jr.**  
**School Business Administrator/Board Secretary**

# Development of a Needs Based Budget

## *Phase II*

***Determine needs  
based on October 15th  
enrollment***

- *Class size analysis*

## *Phase IV*

***Budget Review Process***

- Line by line department budget review
- Allocation of funds within the school-based budgets based on enrollment, programs and equitable need
- Review by Financial Consultant
- Collaboration with and review by the EBOE Finance Committee

## *Phase V*

***Budget  
Hearing***

## *Phase I*

***Gather input  
from  
stakeholders***

## *Phase III*

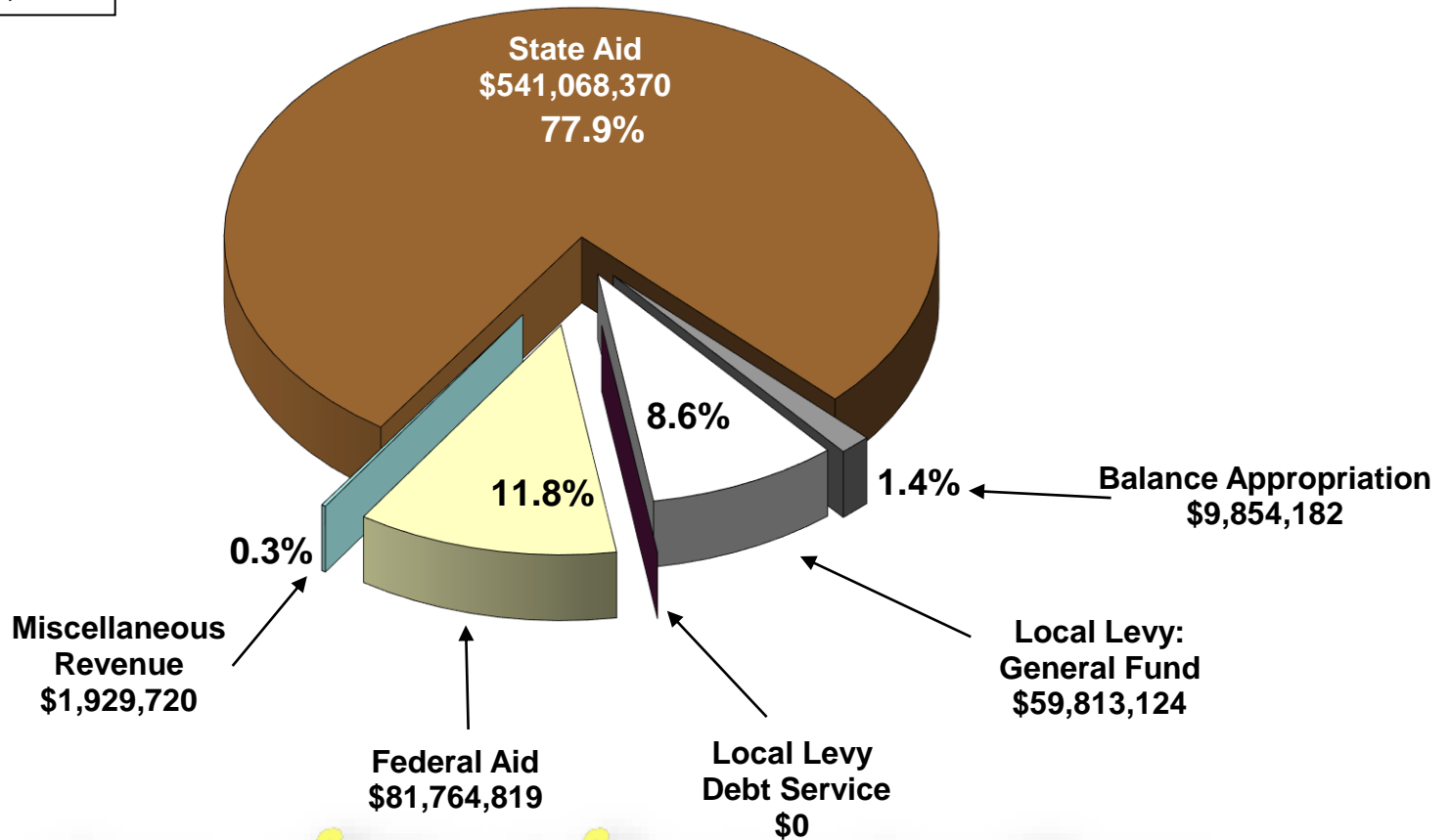
***Determine priorities, adjust budget***

- Face to Face meetings with all Principals
- Review of all curricular inventories and requests
- Face to Face with all Instructional and Operations Directors
- Comparative Analysis of Expenditures for 2021-2022 vs. Proposed Budgets



# Elizabeth Board of Education 2022 - 2023 Budget Revenue

**TOTAL  
BUDGET  
\$694,430,215**



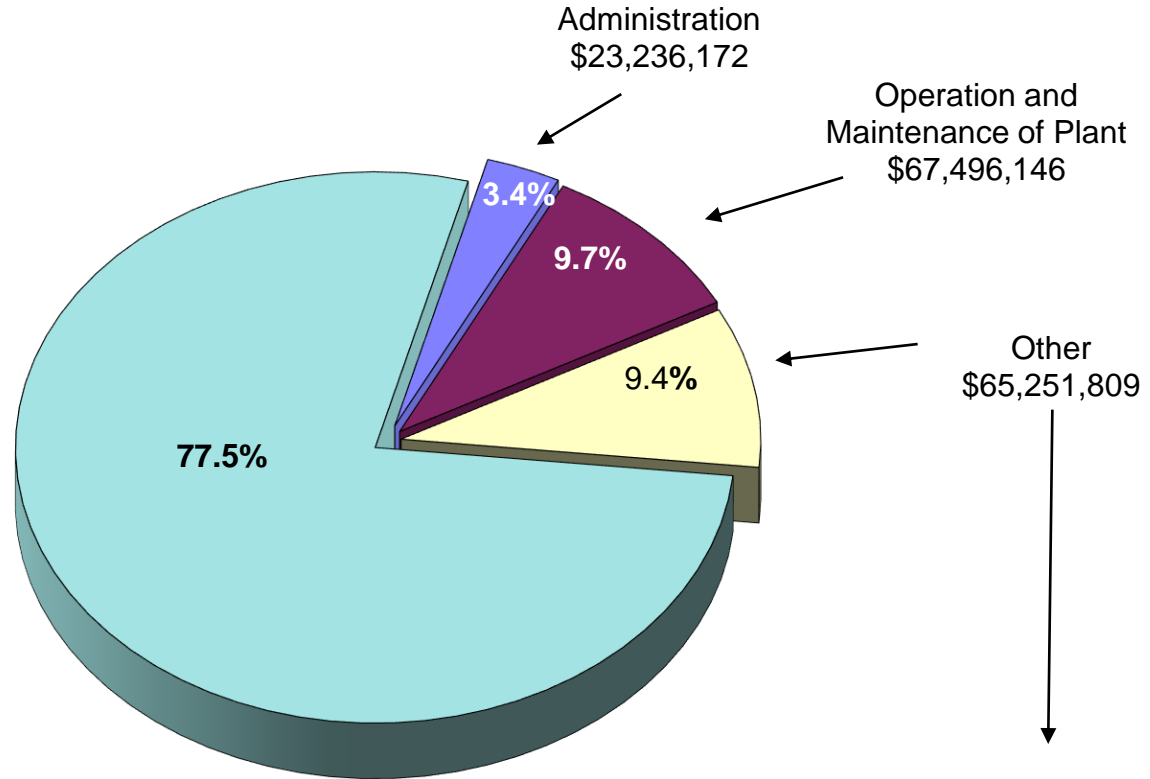
*Every Child, Achieving Excellence*

# Elizabeth Board of Education

## 2022 - 2023 Budget Expenditures

**TOTAL BUDGET**  
**\$694,430,215**

Instruction ,  
Contribution to Whole  
School Reform, and  
Other Programs for Our  
Students  
\$538,446,088



Regular	28,737,497
Support Services	43,899,549
Special Education	39,692,936
Cocurricular Athletics	3,022,948
State and Federal Programs	123,386,572
Contribution to Whole School Reform	298,882,926
Special Schools	823,660

Community Services	648,180
Employee Benefits	34,875,000
Transportation	29,288,959
Capital Outlay	439,670
Debt Service	0



# Where does the money go?

## 2022-2023 Budget Expenditures

**INSTRUCTION**

**77.5%**

**OPERATION  
AND  
MAINTENANCE  
OF PLANT**

**9.7%**

**BENEFITS  
TRANSPORTATION  
CAPITAL OUTLAY**

**9.4%**

**ADMINISTRATION**

**3.4%**



**The American Rescue Plan (ARP) provided \$130 billion in funding to states and districts across the country to help K-12 schools reopen during the pandemic and recover. The Department acted swiftly to release these funds to states and has called on states to act with the same urgency to ensure ARP dollars are reaching districts and classrooms to meet the immediate needs of students, families, educators, and communities.**

# **THE AMERICAN RESCUE PLAN**

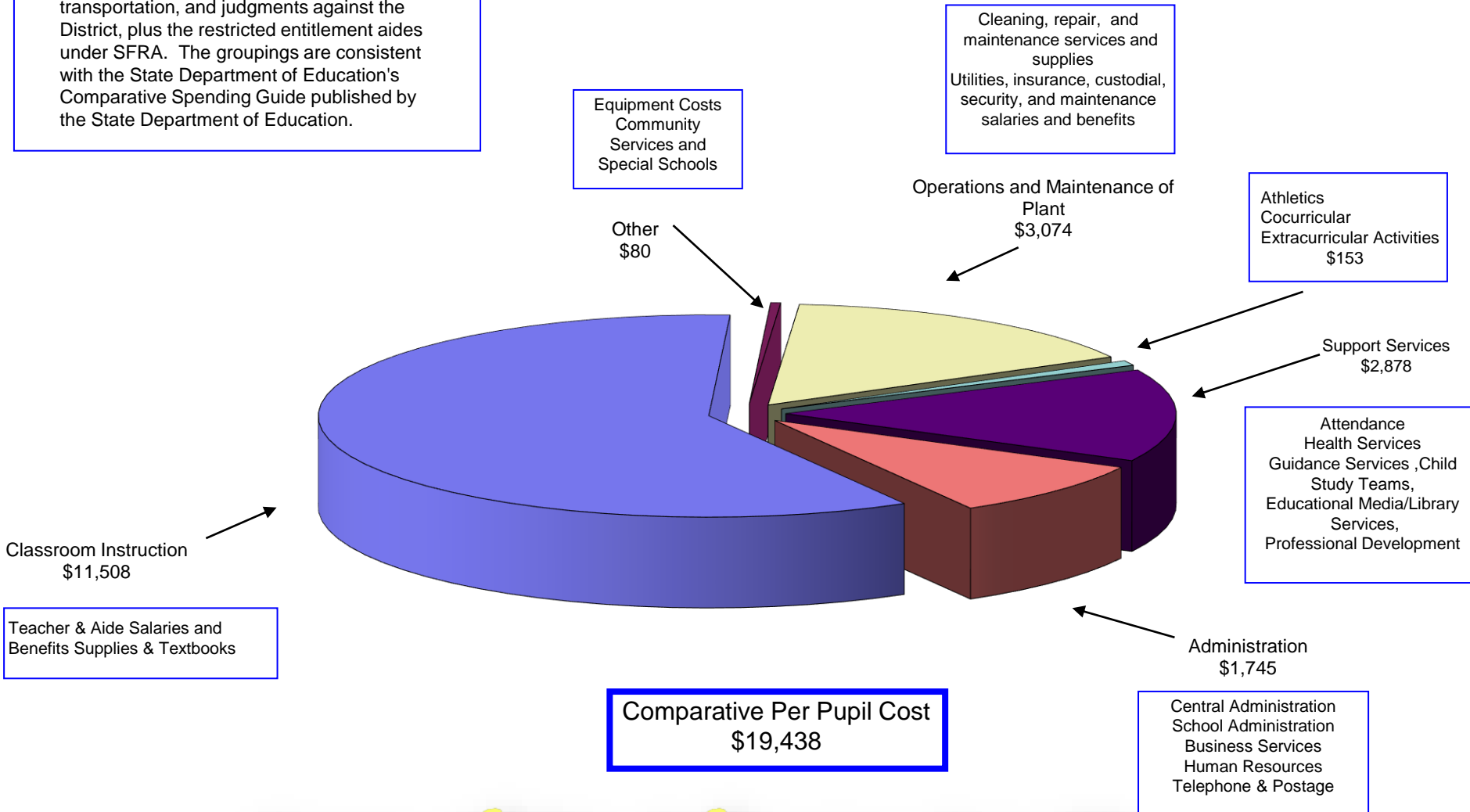
# American Rescue Plan Funding Allocation

PRIORITIES	ESSER II, LEARNING ACCELERATION AND MENTAL HEALTH FUNDS	ARP-ESSER FUNDS
Facility Improvements	\$12,083,350	\$17,220,000
Technology Resources	\$10,721,779	
Academic/Enrichment/Intervention K-12 Programs (Summer/Afterschool/Saturday)	\$6,712,167	\$9,304,567
Wellness Program and Professional Development	\$913,840	\$149,000
Strategic Staffing for Additional Supports	\$57,369	\$6,618,989
Literacy and Mathematics Professional Development and In-person Classroom Support for teachers	\$60,820	\$9,481,232
<b>Total</b>	<b>\$30,549,325</b>	<b>\$42,773,788</b>

# Elizabeth Board of Education

## 2022 – 2023 Per Pupil Costs

Per Pupil Costs are calculated using total current expense exclusive of tuition, transportation, and judgments against the District, plus the restricted entitlement aides under SFRA. The groupings are consistent with the State Department of Education's Comparative Spending Guide published by the State Department of Education.



*Every Child, Achieving Excellence*

# How do we compare on a state level?

## Administrative Cost Per Student



**\$1,745** COST PER STUDENT

**\$2,308** REGIONAL COST PER STUDENT

Elizabeth Public Schools is spending less this year per pupil on administrative cost when compared to the New Jersey regional cost!

# ELIZABETH PUBLIC SCHOOLS

**The 2022-2023 Budget and tax levy proposed is in accordance with the rules and regulations as promulgated by the New Jersey Department of Education.**

**EPS prepares its budget following instructions incorporated into the Budget Guidelines and Electronic Data Collection Manual published by the NJDOE Office of School Finance.**

**The instructions ensure that budgets and information submitted for approval to the Executive County Superintendent and Business Administrator are complete and correct.**



# Building a budget that follows the principles of Our 3E's



*Equity • Expectations • Excellence*

# Budget Development Priorities



# BUDGET GOALS

## Maintaining Our School System

- Adequate staffing for instruction – certified positions
- Increase in supplies equipment, textbook allocations for new students
- Academic Programs
- Safe and Caring Initiatives
- Home and School Relationships
- Academic Safety Nets
- Athletic and Co-Curricular Activities
- Student Assessment
- Technology

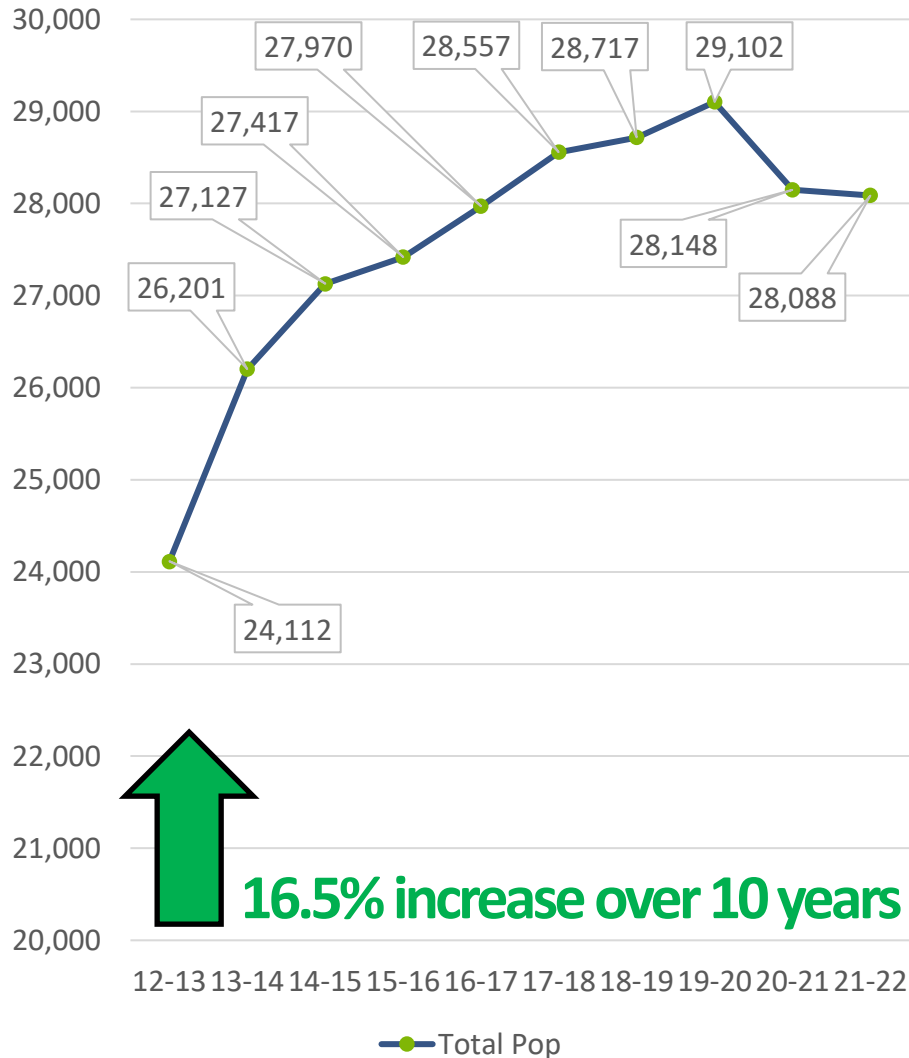
**2022-2023**  
**Budget**  
**Presentation**

# **OUR PROGRAMS AND SERVICES**

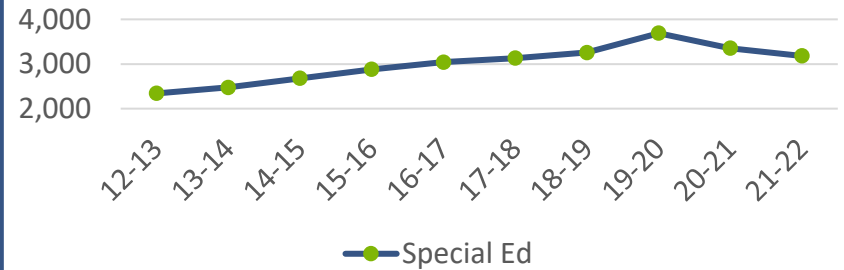
**Maintaining Our  
School System**

# Enrollment Trends

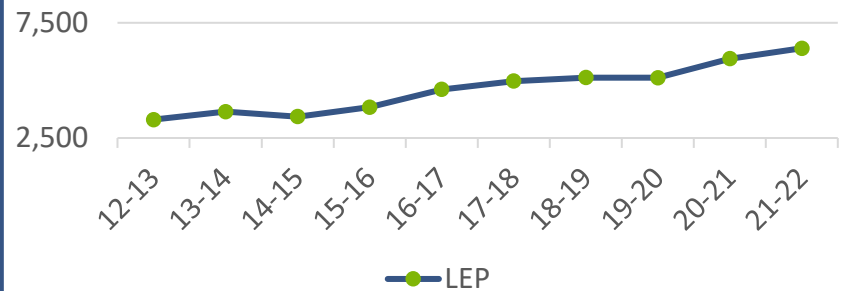
## TOTAL POPULATION



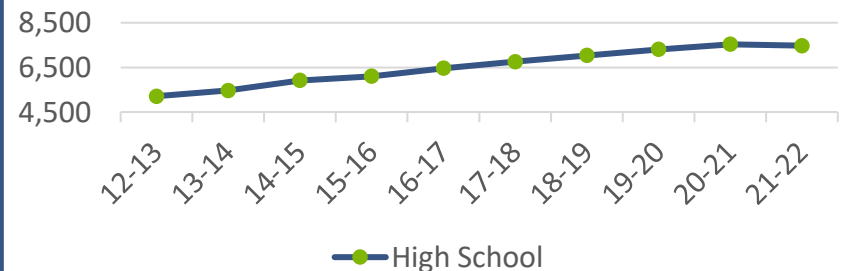
## SPECIAL EDUCATION



## ENGLISH LANGUAGE LEARNERS



## HIGH SCHOOL





# Meeting the Education Needs of Rising Numbers of Newly Arrived Migrant Students

Population	Students who enrolled since October 15, 2021
General Education	453
<b>English Language Learners (ELL)</b>	<b>633</b>
Students with Disabilities	119
<b>TOTAL</b>	<b>1,205</b>



# Maintaining Our School System

## Adequate staffing for instruction

### *Adequate staffing for instruction*

Teacher to pupil ratio

K – Gr 5 = 1:19

Gr 6 – Gr 8 = 1:21

Gr 9 – Gr 12 = 1:19

#### **CERTIFIED POSITIONS = 78**

Teacher- Bilingual = 14

Teacher- ESL = 9

Teacher-Mathematics = 5

Teacher – English/ELA = 5

Teacher – Elementary (K-5) = 11

Teacher-Physical Education = 8

Teacher – World Language = 2

Teacher – Social Studies = 3

Teacher – Science = 2

Teacher – Special Education = 6

Teacher – Art = 2

Teacher – Music = 1

Teacher – Instructional Coach (IT) = 1

Guidance Counselor = 3

Nurse = 2

Coordinator – Staff Development = 1

Vice Principal = 1



# \$60K The First Day

🕒 April 18, 2022 • 📁 News • 🕒 2 min read

*By Pete Vala (Associate Director, NJEA Division of Research and Economic Services)*

There are only 74 school districts in New Jersey with a bachelor's degree starting salary at or above \$60,000 for those on a teacher's salary guide.



starting salary  
**\$61,296**



# Maintaining Our School System

## *Adequate staffing for instruction*

### **NON-CERTIFIED POSITIONS = 30**

Painter = 2

Head Custodian = 3

Custodian = 6

Computer Technician = 8

Administrative Secretary = 2

Assistants – Classroom/Personal = 6

Security Guards = 2

Coordinator – IT = 1



## *Increase in supplies equipment, textbook allocations for new students*

New instructional supplies, equipment,  
textbook for anticipated 2% increase in new  
students in schools

# Maintaining Our School System

## *Academic Programs:*

Refurbishment for grades K-12 core instructional program materials including general education, bilingual education, and special education)

MyAccess writing program

Science program for grades K-5 and refurbishment for grades 6-12 (including general education, bilingual education, and special education)

Gifted and Talented refurbishment

International Baccalaureate refurbishment for grades K-8

Art, Dance, Drama and Music refurbishment and Physical Education and Health refurbishment

Library refurbishment for grade K-1, and grades 9-12

Career and Technical Education (CTE) for grades 9-12



# The 2022-2023 Budget

## Science Program for Grades K-5

\$600,000

## *Academic Programs:*

# Maintaining Our School System



**NEW**

Marine Corp Junior Reserve Officers in Training Corp (JROTC)

Partnerships for grades 9-12

National Academy Foundation (NAF) for grades 9-12

Federal Express/Global Logistics Partnership

Advanced Placement Exams

Pre-K Disabilities supplies and materials

Transition Program for our overage high school students remaining in school until they are 22 years of age

Refurbishment of SONDAY multisensory reading program for students with disabilities in grades K-8

Edmark utilized by our Autism/MC/MD programs



# Maintaining Our School System

## *Safe and Caring Initiatives:*

### Contracted services:

- Nursing
- Speech
- Occupational therapy & Physical therapy
- Chief Medical Inspector
- Behavioral services
- Student drug screenings

- Substance Abuse Coordinator (SAC) services
- Investigators & School Security Guards services
- School Guidance Counselor services
- Social Worker services
- School Nursing services
- Child study Team (CST) services
- American Red Cross CPR training
- Before-school breakfast programs
- High School Saturday programs
- Positive Behavior Supports in Schools (PBSIS) supports
- Recovery High School tuition and transportation
- Alternative education programs for at-risk learners

# Maintaining Our School System

## *Transportation of students*

Students with disabilities

Students attending magnet programs that reside 2.0 and beyond

- 2.0 and beyond for Pk-8 students
- 2.5 and beyond for 9-12 students

Preschoolers that require transportation as per the IEP

Homeless and displaced students

Foster children

# Maintaining Our School System

### Community Services

- PowerSchool – Student Information System
- PowerSchool – Schoology – Learning Management System
- Welcome Centers – Centralized Registration
- High School Registration (After School/Saturday/Summer)
- Community Attendance Liaisons
- Special Education Parent Advisory Committee
- Bilingual Education Parent Advisory Committee
- Student Handbooks and Parent Handbooks
- Communication materials and brochures designed to promote school and district programs available in multiple languages
- High School Information Sessions
- Community Education Program
- Free Application for Federal Student Aid (FAFSA) Seminars
- District Website
- School Events:
  - National Honor Society
  - Back to School Nights
  - Awards Ceremonies

# Maintaining Our School System

## *Academic Safety Nets*

### Summer Academics

- Promotion/Retention program for grades K-8
- Summer Literacy Interventions Program
- Summer Remediation and Advanced Credit for grades 9-12
- Marine Corps Junior Reserve Officers Training Corps (JROTC)
- Home Instruction Services
- Reading is Essential to Adolescent Development (READ) for grades K-3
- Algebraic Thinking for grades 6-8
- Developing Mathematical Understanding for grades 4-5
- Recreation Program for Special Education
- Extended School Year (ESY) for students with disabilities PreK to age 21)
- Summer Arts Enrichment for grades K-11

# Maintaining Our School System

## *Academic Safety Nets*

### Programs for students with disabilities

- Opening of two new self-contained autism classrooms
- TouchMath for grades K-8
- Edmark for Autism/MC/MD
- 504 Plan Related Services
- Extended School Year (ESY) for students with disabilities PreK to age 21)
- Contracted services:
  - Nursing
  - Speech
  - Occupational therapy
  - Physical therapy
  - Behavioral Services

Applied Behavior Analysis (ABA) Services

Rethink

Union County Educational Services Commission (UCESC) Transition Partnership

Verbal Behavior Milestones Assessment and Placement Program (VB-MAPP)

# Maintaining Our School System

## *Academic Safety Nets*

Before-school and after-school basic skills and enrichment programs

- After school enrichment program for grades K-8
- Saturday Recreation Program for students with disabilities
- After School Clubs for high school students
- Attendance Recovery Program for high school students (Saturday)
- Graduation Rate Improvement Program (GRIP) for high school students (Saturday)

### Academic Interventions

- Advancement Via Individual Determination (AVID) for grades 6-12
- Agile Minds Mathematics for grades 8
- Response to Intervention (RTI)
- Hispanics Inspiring Students Performance and Achievement (HISPA) – role model program for grades 6-8
- SONDAY multisensory interventions
- Orton Gillingham
- Leveled Literacy Interventions



# Maintaining Our School System

## Academic Interventions

- Khan Academy – supplemental resource for mathematics (no cost)
- ST Math for grades K-5 for all students
- SuccessMaker for Reading and Mathematics for Grades K-8 for General Education, Bilingual ICS, Bilingual Math SC, and Special Education
- Achieve 3000 for ELA for Grades K-8 in Self-Contained Bilingual classrooms

## Programs for bilingual students

- Self-contained Bilingual and ESL services
- Native language materials
- Transition services
- Bilingual Magnet Program for grades 4-8 (Spanish)
- Point of Entry for grades 9-12
- Esperanza Literacy Intervention

## Home Instruction

- Contracted providers
- Hospital Home Instruction
- After school Home Instruction

# Maintaining Our School System

## Athletic and Co-Curricular Activities

- Complete array of clubs and activities
- Athletic Summer Camps
- Intermural Sports for grades 6-8
- Athletic Programs for grades 9-12
- Summer Band Camp for grades 9-12
- New Jersey State Police Top Physical Challenge
- Young Men's Christian Association (YMCA) Health Bee
- Special Olympics
- Saturday and Summer Recreation Program for students with disabilities

# Maintaining Our School System

## Student Assessments

- High School Graduation Appeals Portfolios
- State Testing Program for NJ Student Learning Assessment (NJ SLA),
- Dynamic Learning Maps (DLM),
- Developmental Reading Assessment (DRA) and Evaluacion del Desarrollo (EDL)
- College Board Assessments:
  - Preliminary Scholastic Aptitude Test (PSAT)
  - Scholastic Aptitude Test (SAT)
  - Advanced Placement (AP)
  - PreK IDEA Proficiency Test (Pre-IPT)
- New Entrant Testing for English Language Learners
- Translation services for student assessments
- Verbal Behavior Milestones Assessment and Placement Program (VB-MAPP) for students with Disabilities

# Maintaining Our School System

## Technology

- Information Technology (IT) Technicians
- Internal and External Communications
  - E-mail system
  - Phone system
  - Robo-call system (Blackboard APP Connect)
- Technology Training
- Continued Maintenance of Technology Resources at the district and school level
- District, school, and teacher webpages
- Maintenance of internal bandwidth capacity
- Microsoft Office 365
- E-mail addresses for students in grades 6-12
- Destiny: Follett Library Management System
- Maintenance of equipment for TV studio
- Maintenance of one-to-one devices for grades 2-12
- Frontline Applitrack – Human Resources System
- SHI Student – Staff ID System/TPASS Visitor Security System
- Versatrans System – Transportation software system
- Financial Systems

# **OUR PROGRAMS AND SERVICES**

**Raising Standards and  
Expanding Opportunities**

# BUDGET GOALS

**Raising Standards and  
Expanding  
Opportunities**



**Resources to close  
the achievement  
gap**



**Resources to  
enhance technology  
standards for  
students and  
teachers**



**College and Career  
Readiness**



**Visual and  
Performing Arts  
Enrichment**



**Review of  
Instruction**



# Raising Standards and Expanding Opportunities

## *Resources for Closing the Achievement Gap*

Office of Equity and Inclusion

Coordinator of Community Education Programs

Guidance Counselor to track and monitor Out of District students

Leveled curricular materials

Data Analyst to identify strengths and weaknesses of at-risk populations

Culturally relevant supplemental curricular materials

Consultants to examine Curriculum of Inclusion

15-hour Sheltered Instruction Module for all instructors (no charge)

Summer transition program to 9<sup>th</sup> grade

Children's Literacy Initiative (CLI) Partnership

# Raising Standards and Expanding Opportunities

## *Resources to Enhance Technology Standards for Students and Teachers*

Computer Literacy Teachers for grades K-5

Partnerships for grades 9-12 and Industry Certifications

- National Academy Foundation (NAF)
- Global Logistics/Federal Express
- Certification Exams for Engineering
- Global Logistics Exams

National Academy Foundation (NAF)

- Be Future Ready: Academy of Information Technology & Project Lead the Way

Structured Learning Experiences (SLE) – Advisors & Internships

- United Way of Greater Union County
- ShipCo
- Automotive Technology
- Print Services
- Health Sciences
- Cosmetology/Barbering/Commercial Foods
- Fashion/Marketing

# Raising Standards and Expanding Opportunities

## *Career and College Readiness*

International Baccalaureate for grades K-8

Naviance for College and Career Readiness for grades 9-12

Dual Enrollment Partnerships:

- Kean University
- New Jersey Institute of Technology (NJIT)
- New Jersey City University
- Middlesex County Community College (MCCC)

Transition program for students with disabilities

College visits

Advancement Via Individual Determination (AVID) for grades 6-12.



AVID's mission is to close the opportunity gap by preparing all students for college readiness and success in a global society.

## **NEW** AVID sites for 2022–2023

Joseph Battin School No. 4

Dr. Albert Einstein Academy School No. 29

Chessie Dentley Roberts Academy School No. 30



The additions of these three schools will mean 29 EPS schools will be in partnership with AVID in the 2022–2023 school year.

# Raising Standards and Expanding Opportunities

## Visual and Performing Arts

- Teen Arts Program

- Summer Arts Institute

- Music Theater Orchestra

- High School performing arts program after school

- Disney Musicals in Schools

- HBO partnership

- Visual Arts Center of New Jersey

## Review of Instruction

- Revisions of curricula

- Revisions of benchmarks

- iObservation (Danielson and Marzano evaluation systems)

# **OUR PROGRAMS AND SERVICES**

**Building Professionalism-  
Resources**



## *Resources for Professional Development*

Mentoring first-year teachers

New teacher training

- Montclair State University Network for Educational Renewal

Content Area Trainings (including Bilingual and Special Education)

Harassment Intimidation and Bullying (HIB)

Language Arts Literacy Training: K-3 On-site Coaching

Mathematics Training for Grades K-8 & HS Algebra I Advanced, Algebra II: On-site Coaching

Training for Librarians on Literacy Instruction

Safety and Security of our Schools

Personalized Learning Environments and Differentiating Instruction

Handle with Care

Global Compliance Network Professional Development System

Administrators' Institute

District PD days

**2022-2023  
Budget  
Presentation**

# **Protecting Our Investments**

**Capital and Maintenance Projects**

## Capital and Maintenance

### Protecting Our Investment

Replace classroom a/c unit (1 school)  
Renovate bathrooms (2 schools)  
Repair/replace bleachers (1 school)  
Renovate cafeteria (1 school)  
Ceiling replacement (2 schools)  
Radiator covers (1 school)  
Replace classroom door (1 school)  
Clean duct work vents (1 school)  
Replace floor and carpets (10 schools)  
Replace flushometers (2 schools)  
Replace grease traps (8 schools)  
Improve heating, replace radiators (2 schools)  
Improve lighting (2 schools)  
Replace bell/intercom system (1 school)  
Repair drainage problem (1 school)  
New lockers (2 schools)

## Capital and Maintenance

### Protecting Our Investment

Install master clock (1 school)  
Install new push hardware playground (1 school)  
New cold water main (1 school)  
Radios for custodial staff (1 school)  
Replace missing classroom numbers (2 schools)  
Replace roof leaders and skirts on TCU's (1 school)  
Sound system intercom upgrades (7 schools)  
Replace shades (13 schools)  
Replace bathroom stalls (1 school)  
replace stage curtains (1 school)  
Replace counterbalance (3 schools)  
Replace / install wall matts (3 schools)  
Replace chalkboard with white boards (3 schools)  
Replace all steam & return lines in trench (1 school)  
Replace all metal pull stations covers (1 school)  
New steam return in tunnel (1 school)  
Replace exterior doors (1 school)  
Replace projection screen in auditorium (1 school)

## Capital and Maintenance

### Planning for the Future

Asphalt replacement (2 schools)  
Repoint brick on main building (1 school)  
Add bathrooms in kindergarten classrooms (2 schools)  
Replace gym ceiling (1 school)  
Replace cold water main (1 school)  
Convert nursing room to conference room (1 school)  
Convert classrooms (3 schools)  
Replace and or install new doors (3 schools)  
Replace gym floors (3 schools)  
Replace greenhouse glass room (1 school)  
Additional heat in the weight room (1 school)  
HVAC installation (3 schools)  
Paint entire building (2 schools)  
Paint classrooms (3 schools)  
Roof replacement (9 schools)  
Shoprite/backing room (1 school)  
Replace hot and cold-water lines in tunnel (1 school)  
Exterior wall weatherproofing (1 school)  
Build black box theater space (1 school)



**Return on our  
Investments**



**WELCOME  
BACK!**

**EPS Welcomes Back Students/  
Team Members To In-Person Learning  
for 2021-2022 School Year**





**William F. Halloran  
School No. 22**

**Elementary Schools Rank  
No. 6 in NJ  
Middle Schools Rank  
No. 50 in NJ**

**Terence C. Reilly  
School No. 7**

**Elementary Schools Rank  
No. 39 in NJ  
Middle Schools Rank  
No. 11 in NJ**





ELIZABETH HIGH SCHOOL  
FRANK J. CICARELL ACADEMY

**Elizabeth High School  
Frank J. Cicarell Academy**

**No. 13 in NJ  
No. 262 in US**

**Alexander Hamilton  
Preparatory Academy**

**No. 45 in NJ  
No. 1,116 in US**

# Top 300

**Most Challenging High Schools in United States**

**Jay Mathews Challenge Index  
High School Rankings**

**Elizabeth High School  
Frank J. Cicarell  
Academy**

**#192**



Elizabeth High School – Frank J. Cicarell Academy

**2022 AP<sup>®</sup> CSP**

**Female Diversity Award**







# College Prepared and Career Ready

Postsecondary academic institutions, technical schools, and military branches in which Elizabeth Public Schools' Class of 2021 graduates committed to enroll or enlist

American University  
Arcadia University  
Arizona State University  
Babson College  
Bloomfield College  
Boston College  
Boston University  
Buena Vista University  
Caldwell University  
California State University  
Carnegie Mellon University  
Cedar Crest College  
Central Connecticut State University  
Clemson University  
College of Saint Elizabeth  
Cornell University  
County College of Morris  
Dean College  
Cosmetology School

Delaware State University  
Drake University  
Drew University  
Drexel University  
Duke University  
East Carolina University  
Embry-Riddle Aeronautical University  
Emory University  
Fairleigh Dickinson University  
Felician University  
Florida State University  
Fordham University  
George Mason University  
George Washington University  
Georgia State University  
Hampton University  
Hartwick University  
Hawaii Pacific University  
Howard University

Iowa State University  
Johnson & Wales University  
Kean University  
Liberty University  
Lincoln Technical Institute  
Long Island University  
Manhattan College  
Mercy College  
Messiah University  
Middlesex County College  
Molloy College  
Monmouth University  
Montclair State University  
Morgan State University  
New Jersey City University  
New Jersey Institute of Technology  
New York Institute of Technology  
New York University  
Northeastern University



# College Prepared and Career Ready

Postsecondary academic institutions, technical schools, and military branches in which Elizabeth Public Schools' Class of 2021 graduates committed to enroll or enlist

**Pace University**  
**Pennsylvania State University**  
**Police Academy**  
**Pratt University**  
**Princeton University**  
**Ramapo College of New Jersey**  
**Rider University**  
**Rochester Institute of Technology**  
**Rowan University**  
**Rutgers University**  
**Saint Peter's University**  
**Savannah College of Art and Design**  
**Scranton University**  
**Seton Hall University**  
**Simmons University**  
**Spelman College**  
**St. Francis University**  
**State University of New York**  
**Stevens Institute of Technology**  
**Stockton University**

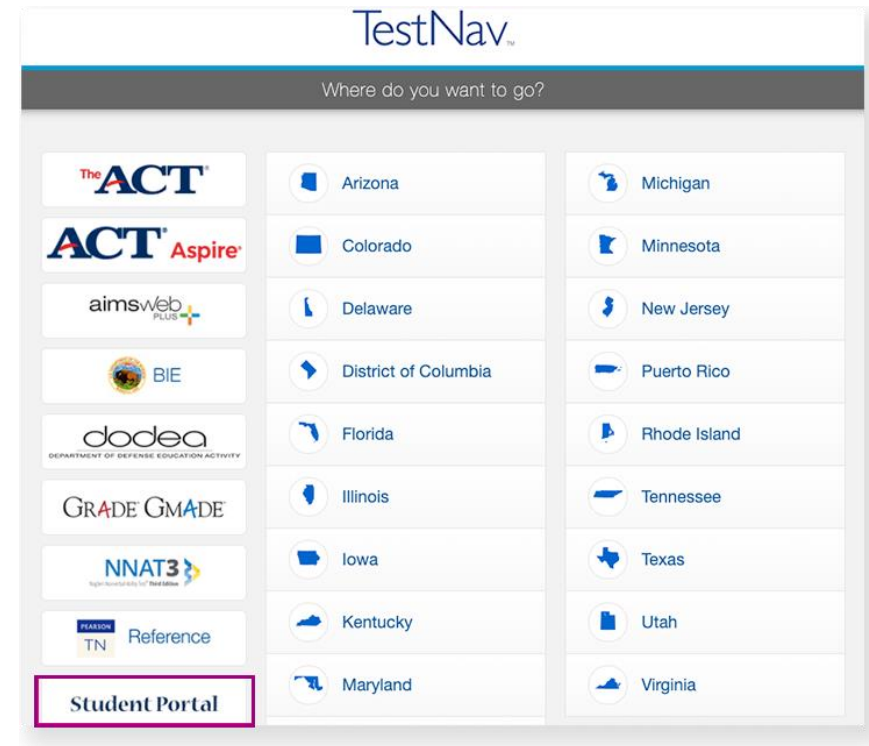
**Syracuse University**  
**Temple University**  
**The College of New Jersey**  
**The Culinary Institute of America**  
**Towson University**  
**Tufts University**  
**Union County College**  
**United States Air Force**  
**United States Army**  
**United States Coast Guard**  
**United States Marine Corps**  
**United States Navy**  
**Universal Technical Institute**  
**University of Arizona**  
**University of California – Berkely**  
**University of California – Irvine**  
**University of California – San Diego**  
**University of Connecticut**  
**University of Delaware**

**University of Florida**  
**University of Hartford**  
**University of Illinois – Chicago**  
**University of Iowa**  
**University of Maine**  
**University of Nebraska – Lincoln**  
**University of New Haven**  
**University of Oregon**  
**University of Pennsylvania**  
**University of San Francisco**  
**University of Southern California**  
**University of Tampa**  
**University of Vermont**  
**University of Wisconsin**  
**Vanderbilt University**  
**Virginia Tech University**  
**Wesleyan University**  
**William Paterson University**  
**Xavier University**



**John E.  
Dwyer  
Technology  
Academy  
Students  
Accepted to  
Yale,  
Harvard**





**EPS One of Two NJ Districts to Pilot  
Pearson's TestNav Connect Platform**





**EPS Hosts Successful Teacher Job Fair**

# EPS Named a Best Community for Music Education



Brought to you by The **NAMM** Foundation®





**EPS Receives \$22K Grant from Sound Start Foundation**  
**Save the Music Intro to Music Grant for**  
**Music Programs at School Nos. 3, 6**



# EPS Partners with NJ State Police for 10th Annual Coat Drive







**EPS Partners with Moving New Jersey Forward Foundation and Quattro to Collect Food/Equipment to Support Displaced Ukrainians**





**EPS Partners with Be The Change NJ (Kean University) to Support People of Ukraine Through Toys For Change Collection**



# EPS Hosts Amistad Collaborative Forum





**EPS Students Participate in  
Environmental Week - “It Is Up to Us, Resilience/Climate Change”**





# EPS Students Confront Climate Change In Elizabeth







**EPS Nurse Coordinator Marie Noonan Named President of the Union County School Nurses Association & Union County Representative to the New Jersey State School Nurses Association**



# Gregory McQueen

**EHS Track and Field**

**signs with**

**Division 1**



**Rutgers  
University**





# **Mathew Giraldo**

**EHS Soccer  
signs with  
Division 1**



**Fairleigh Dickinson  
University**





**Minutemen Boys Basketball Win  
Group 4 State Championships**





**Minutemen Boys Soccer Wins  
North 2, Group 4 State Championships**





**Gregory McQueen — Elizabeth High School Winter Track & Field  
NJSIAA Meet of Champions Winner — 200 M Dash - 21.82**



**Elizabeth High School 4x800 Relay Team — Winners of  
Union County Relays, Group 4 State Relays and  
Emerging Elite National Championship at Nike Indoor Nationals**





**Elizabeth Varsity Competition Cheerleading Team  
1st Place — High School Game Day NCA Division**

# EHS Soccer Players Ring Opening Bell at NYSE

OCTOBER

A  
LIS  
NY







**EHS Marching Band Wins NJMBDA Class AAA State Championship**





**EHS Winter Color Guard Returns to Action,  
Wins Three MAIN 2022 Scholastic A Competitions**



**Jefferson Arts Academy Student Wins NJ Poetry Out Loud Competition**



## 2022-2023 Budget Presentation

- The Board of Education and Central Office believe in an open and transparent budget process. All Board of Education meetings are open to the public, and agendas and meeting minutes are available at [www.epsnj.org](http://www.epsnj.org)
- Copies of the 2022-2023 budget are on file at the Elizabeth Board of Education – Mitchell Building (500 N. Broad St.)
- A copy of the proposed budget is posted online at the district's web site: [www.epsnj.org](http://www.epsnj.org)



# *Our* ELIZABETH BOARD OF EDUCATION



Rosa Moreno-Ortega  
President



Iliana Chevres  
Vice President



Nathalie Alcaide-Hernandez



Diane Barbosa



Maria Z. Carvalho



Charlene Bathelus Dorgely



Jerry D. Jacobs



Stanley Neron



Stephanie Goncalves Pestana





# 2022-2023 Budget Presentation



Thank you!  
Olga Hugelmeyer  
Superintendent of Schools  
May 5, 2022