



presented by  
**Olga Hugelmeyer**  
Superintendent of Schools  
November 23, 2021

# OUR SCHOOL SYSTEM

ELIZABETH PUBLIC SCHOOLS

**28,339**  
**STUDENTS**



**37 SCHOOLS**

**3** EARLY CHILDHOOD  
CENTERS

**20** NEIGHBORHOOD  
SCHOOLS

**6** MAGNET  
SCHOOLS

**8** HIGH  
SCHOOLS

**2<sup>nd</sup> Largest District** in the State of New Jersey

Student  
Demographic



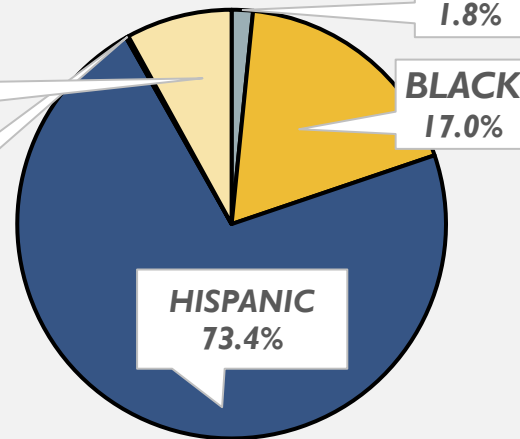
WHITE  
7.6%

OTHER  
0.2%

Male **50.70%**

Female **49.29%**

x **0.01%**



Student Profile

**68.0%**  
General  
Education

**20.0%**  
ELL

**10.8%**  
Special  
Education

**1.15%**  
Special Ed  
& ELL

**.79%**  
Homeless



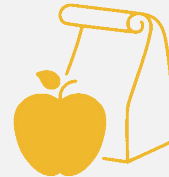
**ENROLLMENT** + **4,757 Students**  
IN PAST 10 YEARS

2011-2012 School Year – 23,391 students  
2020-2021 School Year – 28,148 students **↓ 3%**  
in 20-21



**GRADUATION RATE – 81.6%**

EPS record 1,622 students graduated as  
members of the Class of 2020

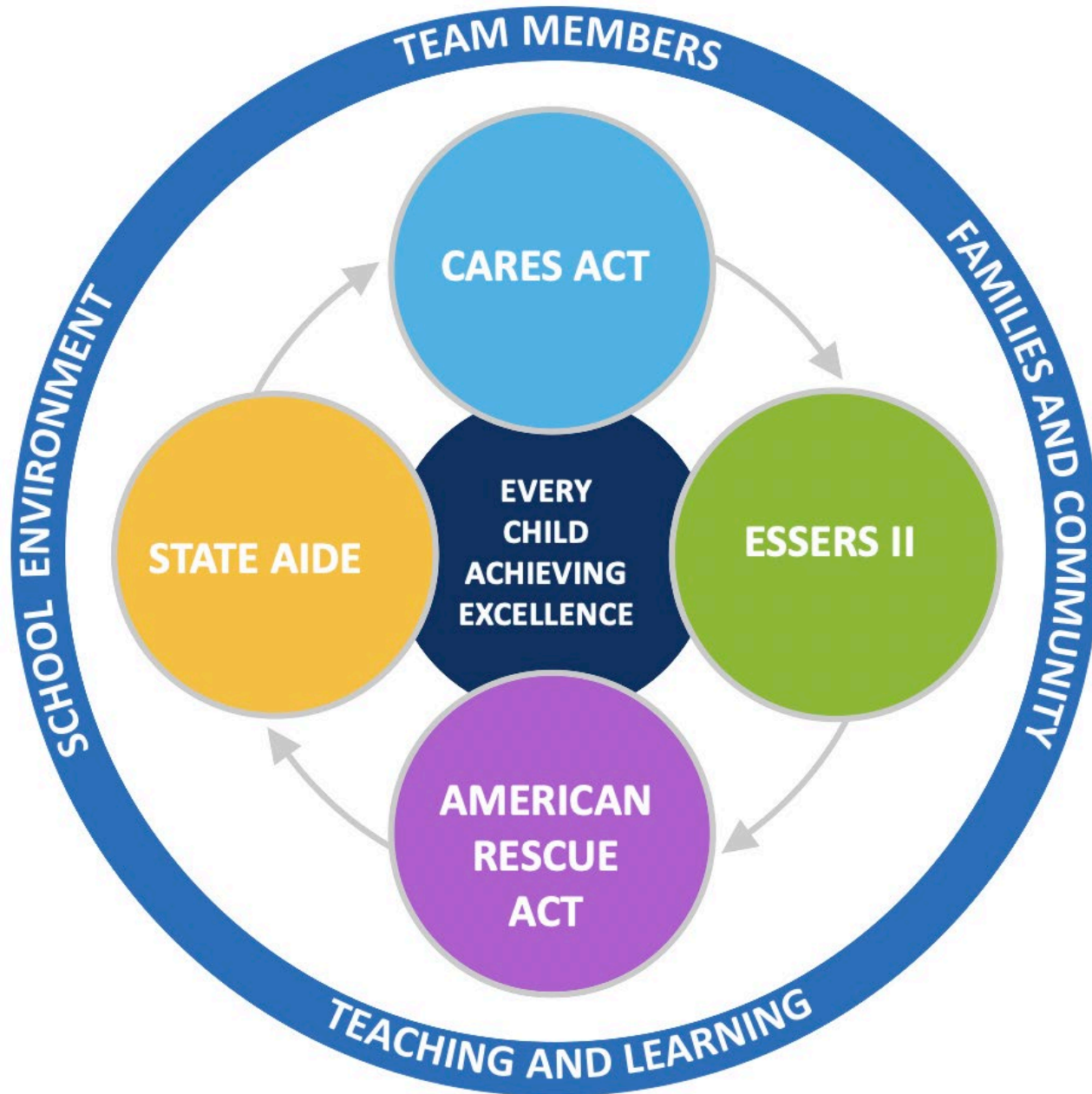


**79.8% FREE/REDUCED LUNCH**



**WORKFORCE**

2020-2021 School Year  
4,074 team members



# The Core Beliefs for Elizabeth Public Schools



1

## *Student*

We believe ALL students can learn and achieve at high levels regardless of race, ethnicity, culture, neighborhood, household income or home language.

*ALL Means ALL. We will narrow the achievement gaps of students by providing a high-quality education to ensure that ALL of our students are college and career ready.*

2

## *Teacher*

We believe teachers make a positive difference in student achievement. Teachers will prepare ALL students for success in college, career, and our technological global society.

*We believe that teachers are central in a child's life. Having an effective teacher is the single most important factor in student success.*

3

## *Leader*

We believe that effective leaders demonstrate unwavering commitment to high levels of achievement for ALL students.

*Leaders will exemplify and support practices that promote high levels of achievement for ALL students.*

4

## *Family*

We believe that parents and caregivers are both valued partners and active participants in their children's learning. A shared sense of mutual responsibility for learning is the foundation for family involvement to ensure student success.

*We are committed to engaging parents and caregivers in their children's education. We will develop a coordinated strategy that enables parents and caregivers to play an active role in building and sustaining family support for their children's learning and academic success.*

5

## *Team*

We believe that every member of the Elizabeth Public Schools team has a responsibility in producing and supporting high levels of achievement for ALL students.

*Every member of the Elizabeth Public Schools team will make a measurable contribution to the success and achievement for ALL students by ensuring equitable distribution of resources throughout the organization.*



## End of High School

- Consistent Attendance (95%)
- Earns a minimum of 140 credits as outlined in Policy 6146
- Completes 60+ hours of Community Service
- Take at least 1 AP course/Dual Enrollment course/earn vocational certificate
- Achieve a competitive score on the SAT (1050 or better)
- Participation in at least 2 extracurricular clubs/ athletics/community involvement

## End of Grade 9

- Consistent Attendance (95%)
- Earn 35 credits
- GPA 3.0 or better and/or demonstrates consistent growth
- 80% Benchmark Score (Mathematics, English, Social Studies, Science)

## End of Grade 8

- Consistent Attendance (95%)
- Overall Grade of 80% or better and/or demonstrates consistent growth in all courses:
  - English Language Arts/Literacy 80% Benchmark Score or better
  - Algebra I 80% Benchmark Score or better

## End of Grade 5

- Consistent Attendance (95%)
- Overall Grade of 70 or better and/or demonstrates consistent growth in:
  - English Language Arts/Literacy 80% Benchmark Score or better
  - DRA (Developmental Reading Assessment) Score of 50
  - Mathematics 80% Benchmark Score or better

## End of Grade 3

- Consistent Attendance (95%)
- Overall Grade of 70 or better and/or demonstrates consistent growth in:
  - English Language Arts/Literacy 80% Benchmark Score or better
  - DRA (Developmental Reading Assessment) Score of 30
  - Mathematics 80% Benchmark Score or better

## End of Pre-K 4

- Consistent Attendance (95%)
- Score of a 5 on the Early Learning Scale (ELS), Oral Language Strand: Speaking and Storytelling Items

Ensuring that  
Every Child  
Is College &  
Career Ready



End of HIGH SCHOOL

End of Grade 9

End of Grade 8

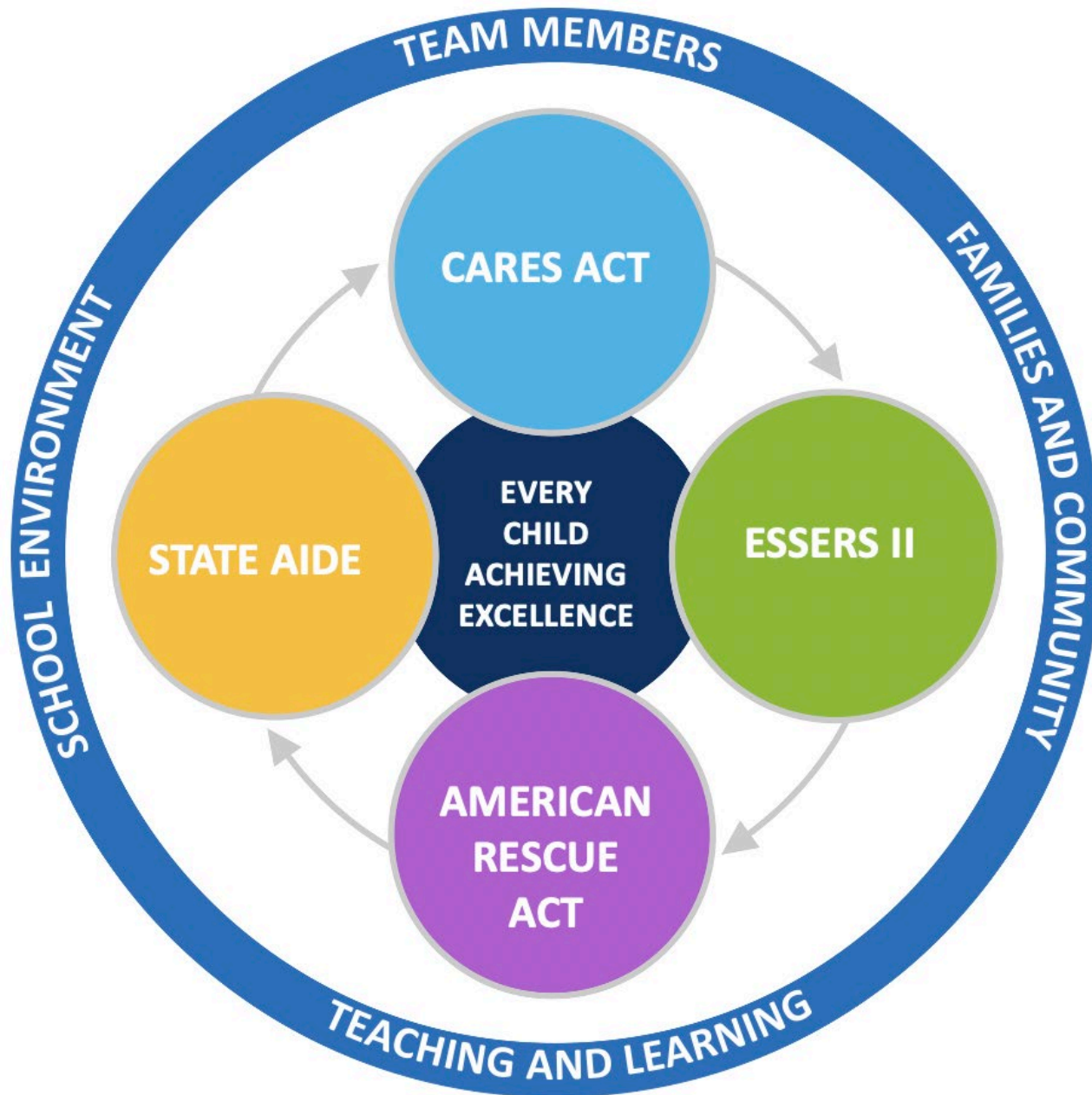
End of Grade 5

End of Grade 3

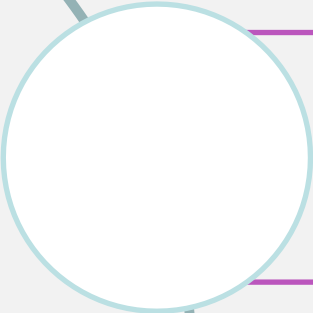
End of Pre-K 4

**THE AMERICAN RESCUE PLAN  
ELEMENTARY AND SECONDARY  
SCHOOL EMERGENCY RELIEF FUND**

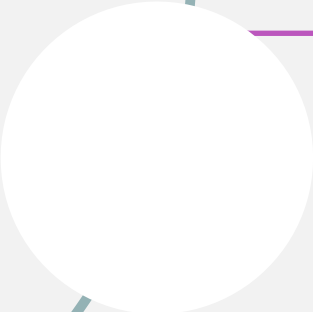
**APR ESSER III**



# AMERICAN RESCUE PLAN

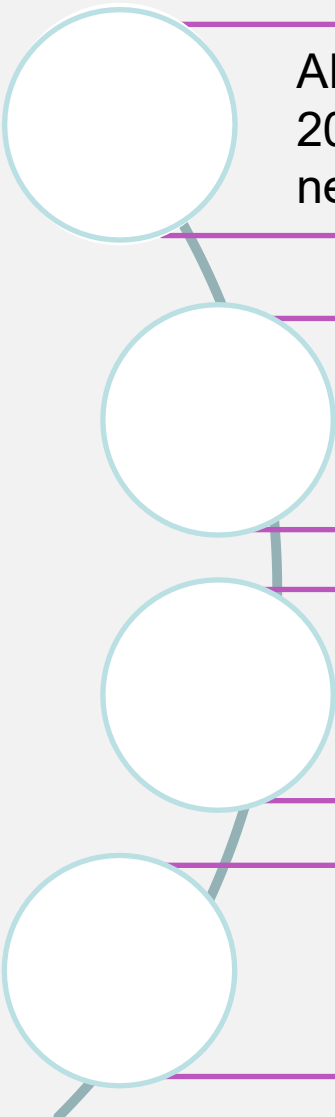


On January 14, 2021, President-Elect Biden announced a proposal for additional COVID relief.



His “American Rescue Plan” would provide \$122 billion for K-12 education to safely reopen, sustain safe operation of schools, and address the impacts of the COVID-19 pandemic on the nation’s students

# AMERICAN RESCUE PLAN BACKGROUND INFORMATION



ARP ESSER funds are directed at the development of a safe return to in-person and at least 20% for learning loss (\$12,841,150) activities that address social, emotional and academic needs. The remaining funds can be used on the same categories as ESSER I and II.

Period of availability is May 24, 2021 – September 30, 2024.

\$2,764,587,703 billion will be dedicated to New Jersey delivered to local school districts based on the Title I funding formula.

The Elizabeth Public Schools District received a consolidated total of \$67,847,623 defined as American Rescue Plan ESSER in \$42,773,788, a reserve of \$21,431,960 and subgrants in the amount of \$3,641,875.



## ADDITIONAL AMERICAN RESCUE PLAN ESSER III FUNDING

	District Award
<b>ARP ESSER III</b>	<b>\$21,431,960</b>
<b>Accelerated Learning Coaching and Educator Support Grant</b>	<b>\$3,126,988</b>
<b>Evidence-Based Summer Learning and Enrichment Activities Grant</b>	<b>\$213,193</b>
<b>Evidence-Based Comprehensive Beyond the School Day Activities Grant</b>	<b>\$213,193</b>
<b>MTSS Mental Health Support Staffing Grant</b>	<b>\$88,501</b>
	<b>\$25,073,835</b>

PRIORITY:ACADEMIC/ENRICHMENT/INTERVENTION PROGRAMS

ESSERS II	ESSERS II FUNDS	ARP - ESSER	ARP-ESSER FUNDS
• Rising Kindergarten Summer Readiness Program	\$457,407	• World Language Summer Program 9-12	\$82,534
• Intensive Literacy Summer/Afterschool Program K-3	\$813,584	• Arts Enrichment Summer Expansion K-11	\$186,954
• Transition for ELLs Summer Program K-1	\$312,286	• ESL Enrichment Summer Program Expansion K-12	\$598,965
• Step Up to Writing Program K-5	\$259,503	• Really Great Reading Afterschool Program K-3	\$1,585,222
• Carnegie Learning Bootcamp 6-12	\$1,080,000	• Academic Math Afterschool Tutoring K-5	\$1,412,360
• Mentorship for Disaffected Youth Afterschool Program 9-12	\$148,601	• Agile Mind Academic Afterschool Program 6-8	\$1,517,574
• Supporting Academic Growth Program K-12	\$626,189	• Carnegie Learning Mathematics Afterschool Program 9-12	\$384,000

PRIORITY:ACADEMIC/ENRICHMENT/INTERVENTION PROGRAMS

ESSERS II	ESSERS II FUNDS	ARP - ESSER	ARP-ESSER FUNDS
• Youth Athletics Summer/Saturday Program	\$876,759	• NJSLA Saturday Program 3-8	\$1,839,489
• Bilingual Achievement Afterschool Program 9-12	\$279,422	• AP Preparatory Saturday Program 9-12	\$109,492
• Work-based Learning Afterschool Program 9-12	\$52,011	• SAT Prep Saturday Program	\$410,159
• CTE Tutoring Afterschool Program 9-12	\$24,912	• NJSLA Saturday Program 9-12	\$90,373
• STEM Enrichment Afterschool Program K-12	\$1,031,275	• Point of Entry Afterschool Program for ELLs K-8	\$664,981
• Quaver Classroom Music Program K-8	\$343,759	• Arts Enrichment Saturday Program 6-12	\$422,464
<b>TOTAL</b>	<b>\$6,305,708</b>	<b>TOTAL</b>	<b>\$9,304,567</b>

## PRIORITY: WELLNESS PROGRAMS AND PROFESSIONAL DEVELOPMENT

ESSERS II	ESSERS II FUNDS	ARP - ESSER	ARP-ESSER FUNDS
<ul style="list-style-type: none"> <li>Individual Counseling Afterschool/Before School/Lunchtime Sessions</li> </ul>	\$132,746	<ul style="list-style-type: none"> <li>Professional Development for Displaced Youth and Families</li> </ul>	\$10,000
<ul style="list-style-type: none"> <li>Social Emotional Learning and Grief: Staff Professional Development and Parent workshops</li> </ul>	\$14,750	<ul style="list-style-type: none"> <li>NJ Transportation Bus Passes for Displaced Youth Age 16+</li> </ul>	\$67,000
<ul style="list-style-type: none"> <li>Social-Emotional Learning Afterschool Program K-12</li> <li>Professional Development for Counselors and Social Workers on Mindfulness and Play Therapy and Student Motivations</li> </ul>	\$458,344	<ul style="list-style-type: none"> <li>Essential Needs/Supplies</li> </ul>	\$72,000
<ul style="list-style-type: none"> <li>Mental Health and Support Services for Displaced Youth and Families</li> </ul>	\$308,000		
<ul style="list-style-type: none"> <li>Social Skills Program Saturday/Afterschool Program K-12 (Special Education)</li> </ul>	\$406,859		
<b>TOTAL</b>	<b>\$1,320,699</b>	<b>TOTAL</b>	<b>\$149,000</b>



## PRIORITY: TECHNOLOGY RESOURCES

ESSERS II	ESSERS II FUNDS	ARP - ESSER	ARP-ESSER FUNDS
• Viewsonic Viewboards HP	\$3,626,631		
• HP Mini Desktop Computers	\$1,011,200		
• Wireless Keyboard and Mouse	\$40,448		
• Student Laptops	\$6,043,500		
<b>TOTAL</b>	<b>\$10,721,779</b>		

PRIORITY: STRATEGIC STAFFING FOR ADDITIONAL SUPPORTS

ESSERS II	ESSERS II FUNDS	ARP - ESSER	ARP-ESSER FUNDS
• Data Monitoring for ESSER Programs	\$57,369	(2) ELA District Instructional Coaches	\$564,310
		(2) Mathematics District Instructional Coaches	\$564,310
		(1) (Child Study Team – Learning Disability Teacher -Consultant, Social Worker, Psychologist, Speech – Language Pathologist	\$1,425,573
		(1) (Child Study Team – Learning Disability Teacher -Consultant, Social Worker, Psychologist, Speech – Language Pathologist (\$1,425,573)	\$1,425,573
		(7) Social Workers	\$2,180,941
		(1) District Psychologist	\$358,297
		Point of Entry Liaisons for Immigrant Students and Families Expansion	\$99,985
TOTAL	\$57,369	TOTAL	\$6,618,989

**PRIORITY: LITERACY AND MATHEMATICS PROFESSIONAL DEVELOPMENT  
AND INSTRUCTIONAL MATERIALS**

<b>ESSERS II</b>	<b>ESSERS II FUNDS</b>	<b>ARP - ESSER</b>	<b>ARP-ESSER FUNDS</b>
• Cultures & Literacies Through Art (CALTA) for the 21st Century Professional Development 9-12	\$60,820	• Heggerty Professional Development K-3	\$44,873
		• Step up to Writing Instructional Materials and Professional Development	\$480,853
		• Carnegie Learning Professional Development Math Teacher Academies	\$401,000
		• Instructional Supplies and Platforms	\$1,071,393
		• Children's Literacy Initiative	\$7,483,113
<b>TOTAL</b>	<b>\$60,820</b>	<b>TOTAL</b>	<b>\$16,739,528</b>

PRIORITY	ESSERS II FUNDS	ARP-ESSER FUNDS
Facility Improvements	\$12,083,350	\$17,220,000



## ALLOWABLE USE OF FUNDS

- ☐ Coordinate emergency response
- ☐ Ensure preparedness and coordination
- ☐ Purchase cleaning supplies
- ☐ Educational technology
- ☐ Mental health supports
- ☐ Supplemental learning
- ☐ Added needs of at-risk population
- ☐ Coordinate long-term closures
- ☐ Addressing needs of individual schools.
- ☐ Professional development
- ☐ ESSA
- ☐ IDEA (Special Education)
- ☐ Perkins (Career & Technical Education)
- ☐ McKinney-Vento Homeless Assistance Act
- ☐ Adult Education and Family Literacy Act
- ☐ Other activities for continuity of services
- ☐ Address learning loss
- ☐ School facility repairs and improvements
- ☐ Improving air quality

## **PROPOSED USE OF \$21,431,960 AMERICAN RESCUE PLAN ESSER III**

### **Addressing Learning Loss**

#### **Academic/Enrichment/Interventions K-12**

##### **☐ K-8 Academic Tutoring (\$854,138 )**

The district will implement a tutoring program to address the needs of learning loss in early literacy development for students in grades K-3. This program will utilize the fundamentals of early literacy skills through the use of multi-sensory instruction.

##### **☐ Grade 9<sup>th</sup> Academic Tutoring (\$620,064)**

After-school tutoring program will be provided to our ninth-grade students. Program will provide instruction focused on the students and their individual needs. The program will provide students the additional time and attention needed to improve their overall academic performance.

##### **☐ Grade 10<sup>th</sup>-12<sup>th</sup> Academic Tutoring (\$620,064)**

After-school program designed to meet the individual needs of our high-school students. Small group and/or one-on-one instruction will be provided in order to ensure students master the NJSLA standards and requirements.

## **PROPOSED USE OF \$21,431,960 AMERICAN RESCUE PLAN ESSER III**

### **Addressing Learning Loss**

#### **Academic/Enrichment/Interventions K-12**

- ☐ Credit Recovery/Accrual Afterschool Program (\$260,169)
- ☐ Credit Recovery/Accrual Saturday Program (\$349,303)

Students work at their own pace in a blended learning environment while completing rigorous coursework to recover credit. The students engage in rigorous, standards-aligned content and graduate with the deep knowledge necessary for post-secondary school success.

## **PROPOSED USE OF \$21,431,960 AMERICAN RESCUE PLAN ESSER III**

### **Addressing Learning Loss**

#### **Academic/Enrichment/Intervention K-12 Programs - Summer and Afterschool**

##### ☐ Rising Kindergarten Summer Readiness Program and Instructional Materials (\$116,262)

Provide incoming kindergarten students with additional supports to target the foundational skills in the area of literacy. Students will be recommended by their Pk-4 Preschool teachers.

##### ☐ Transition for ELLs K-1 Summer Program (\$39,400)

The program will focus on supporting literacy for new entrant English Language Learners in self-contained bilingual classrooms. This program is for current kindergarten and Grade 1 students.

##### ☐ Heggerty Program Materials K-3 (\$102,991)

Heggerty materials will prepare teachers to provide instruction that will improve students' reading, spelling and writing.



## **PROPOSED USE OF \$21,431,960 AMERICAN RESCUE PLAN ESSER III**

### **Addressing Learning Loss**

#### **Academic/Enrichment/Intervention K-12 Programs - Saturday and Afterschool**

- ☐ Social Skills Program (\$209,195)
  - ☐ K-8 Social Skills Saturday Program
  - ☐ 9-12 Social Skills Afterschool Program

The Social skills program has been developed to address the social and emotional development of our students with special needs. This program will allow our students the opportunity to interact with their peers and community.

- ☐ Supporting Academic Growth Program (\$224,541)
  - ☐ K-8 Supporting Academic Growth Saturday Program
  - ☐ 9-12 Supporting Academic Growth Afterschool Program

The Academic growth program will allow our students with special needs the opportunity to recoup skills that may have been impacted during the pandemic and virtual learning.

Both of these programs will be open to our special needs students that have an IEP.

# **PROPOSED USE OF \$21,431,960 AMERICAN RESCUE PLAN ESSER III**

## **Addressing Learning Loss**

### **Academic/Enrichment/Intervention K-12 Programs - Summer and Afterschool**

- ❑ Step up to Writing Instructional Supplies Summer Program K-5 (\$154,782)

This program will support students in grades K-5 as an approach to teaching writing. This is a result of examining our current year's performance in literacy.

- ❑ Bilingual Achievement Strategies Afterschool Program Expansion for ELLs 9-12 (\$134,585)

This afterschool program is designed for high school ELLs in need of literacy and math support who also have excessive absences. The purpose of the program is to increase literacy and math comprehension while keeping track of attendance requirements.

### **Added Needs of At-Risk Population**

- ❑ Mentorship Program for Disaffected Youth Afterschool Program 9-12 (\$68,595)

The Mentorship Program will intensify efforts to work with high school aged disaffected youth in order to provide them with academic, social emotional and employability skills so that may graduate and achieve gainful employment.

## **PROPOSED USE OF \$21,431,960 AMERICAN RESCUE PLAN ESSER III**

### **Added Needs of At-Risk Population**

#### ☐ Mentorship Program for Disaffected Youth Afterschool Program 9-12 (\$68,595)

The Mentorship Program will intensify efforts to work with high school aged disaffected youth in order to provide them with academic, social emotional and employability skills so that they may graduate and achieve gainful employment.

#### ☐ Substance Abuse Alternative Program 9-12 (\$22,842)

This program will serve as an alternative to/or conjunction to suspension for students who have been sent out and have a positive drug screen and/or possession. This program will run on a 3-week cycle on Saturdays. Each week the program will cover a different theme focused on substance abuse awareness and prevention.

Week 1: Drug and Alcohol lessons/curriculum.

Week 2: Triggers and coping with outside influences and mindfulness.

Week 3: Create their own lessons/power point to show their growth in understanding the dangers and risks from substance abuse.

The program will also have guest speakers who will guide our students through real life discussions on prevention and self-regulation.

# **PROPOSED USE OF \$21,431,960 AMERICAN RESCUE PLAN ESSER III**

## **Supplemental Learning**

### **Academic/Enrichment/Intervention K-12 Programs – Summer and Saturday**

❑ Youth Athletics Summer Program 1-8 (\$171,086)

❑ Youth Athletics Saturday Program 1-8 (\$199,971)

The Youth Athletics Summer and school-year Saturday Program will focus on developing fundamental, as well as competitive skills in various sports for students in grades 1-8.

A variety of sports will be available at different grade levels, they include:

- Basketball
- Baseball/softball
- Football
- Soccer
- Volleyball
- Track/Cross-country
- Cheerleading
- Wrestling
- Swimming
- Tennis
- Golf
- Yoga/Dance/Fitness
- Unified Sports (basketball, soccer, swimming)



# PROPOSED USE OF \$21,431,960 AMERICAN RESCUE PLAN ESSER III

## Supplemental Learning

### **Academic/Enrichment/Intervention K-12 Programs - Afterschool**

#### ☐ STEM (\$1,031,275) \$539,029

##### ☐ STEM Enrichment After School Program – K-12 (Academies for K-8 & Virtual Labs for 9-12)

STEM Enrichment After School Program will provide STEM experiences for students in grades K-12. STEM Academies will be offered for grades K-8 to engage in hands-on projects through planning and carrying out engineering design. STEM virtual labs for grades 9-12 will supplement the daily instruction while promoting the process of investigations. This program is open to all students in K-12.

#### ☐ Student Enrichment K-8 Program (\$3,738,557 )

An opportunity to learn in a creative atmosphere, while incorporating fine arts and music into creative literature and technology. A variety of workshops designed to emphasize learning as a discovery process, includes visual and performing arts, musical theater, dance and instrumental music. In addition, students will engage in athletics skill development by learning the fundamentals of each sport. Students will have the opportunity to compete which will help build team concepts and sportsmanship.

# **PROPOSED USE OF \$21,431,960 AMERICAN RESCUE PLAN ESSER III**

## **Supplemental Learning**

### **Academic/Enrichment/Interventions K-12 – Summer Programs**

#### **❑ World Language Summer Program 9-12 (\$12,638)**

This program will provide students an opportunity to develop a foreign language in order to become bilingual and obtain the New Jersey Seal of Biliteracy awarded to students graduating from high school.

#### **❑ Arts Enrichment Summer Expansion K-11 (\$62,705)**

The Arts program will provide students the opportunity to participate in a variety of workshops through visual and performing arts (arts, musical theatre, dance and instrumental music).

#### **❑ ESL Enrichment Summer Program Expansion K-12 (\$84,757)**

This program is designed to engage new entrant English Language Learners using enrichment activities through social studies, science and math to enhance English language.

# **PROPOSED USE OF \$21,431,960 AMERICAN RESCUE PLAN ESSER III**

## **Supplemental Learning**

### **Academic/Enrichment/Interventions K-12 – Afterschool**

#### ☐ Point of Entry Afterschool Program K-8 for ELLs Expansion (\$568,960 )

This afterschool program is designed for new entrant elementary ELLs. The purpose of the program is to provide students with leveled instruction in ELA, Math, Science and Social Studies via engaging activities. Social emotional support and activities is provided by our district bilingual psychologist.

#### ☐ Arts Enrichment Saturday 6-12 (\$36,894)

The program will provide students the opportunity to participate in a variety of workshops through visual and performing arts (arts, musical theatre, dance and instrumental music).

## **PROPOSED USE OF \$21,431,960 AMERICAN RESCUE PLAN ESSER III**

### **Perkins (Career & Technical Education)**

#### **Academic/Enrichment/Intervention K-12 Programs - Afterschool**

- ☐ Work-based Learning Afterschool Program (\$30,357)
- ☐ CTE Tutoring Afterschool Program (\$15,502)

Both After school programs will focus on the recovery of skills needed for CTE students to obtain work-based proficiency in their chosen strand with goal of achieving industry certification.

CTE Tutoring will provide more time in the respective CTE program.

# **PROPOSED USE OF \$21,431,960 AMERICAN RESCUE PLAN ESSER III**

## **McKinney-Vento Homeless Assistance Act**

Displaced Youth and Families (\$103,000)

☐ NJ Transportation Bus Passes for Displaced Youth Age 16+

The transportation proposal will enable students at the high school level to utilize public bussing free of charge beyond the school day.

☐ Essential Needs/Supplies

Funding will cover necessary school supplies and other school related needs.

## **Mental Health Supports**

☐ Mental Health Wrap Around Consulting Services (\$270,000)

☐ Social-Emotional Learning Afterschool Program K-12 (\$204,580)

## **PROPOSED USE OF \$21,431,960 AMERICAN RESCUE PLAN ESSER III**

### **Addressing Needs of Individual Schools**

- ☐ Data Monitoring for American Rescue Plan ESSER II Extension (\$131,559)

To properly evaluate the continuous improvement cycle, the District will be monitoring and supporting all programs proposed through ESSER funds.

- ☐ Data Monitoring for American Rescue Plan ESSER III (\$99,469)

- ☐ Student Achievement - Progress will be monitored quarterly

- ☐ Fidelity Monitoring – Monitoring participation and qualitative survey

- ☐ Stakeholder Feedback – Stakeholder feedback will be gathered via focus groups and surveys throughout the year to drive improvement.



# **PROPOSED USE OF \$21,431,960 AMERICAN RESCUE PLAN ESSER III**

## **Professional Development**

- ❑ Technology Training for Early Childhood Personnel (\$115,700)
  - ❑ Early Childhood training to enhance curriculum provided by Apple.
- ❑ Student growth mindset (\$23,139)
  - ❑ Professional Development for Counselors and Social Workers on Mindfulness and Play Therapy and Student Motivations.
- ❑ Equity Professional Development (\$75,000)
  - ❑ DLH Enterprises will continue to expand the Amistad Mandate to include additional lessons in grades K-12. In addition, there will be an ongoing emphasis on professional development for teachers and administrator that will focus on infusion of lessons in the curricula.
- ❑ Intervention & Referral Services Support Training and On-going Coaching (\$130,000)

# **PROPOSED USE OF \$21,431,960 AMERICAN RESCUE PLAN ESSER III**

## **Professional Development**

### **❑ Intervention & Referral Services Support Training and On-going Coaching (\$130,000)**

The professional development will include a multidisciplinary approach with a well-articulated system of supportive activities and services for staff who have identified student difficulties and those who will be involved in the amelioration of the identified educational concerns. This coordinated service and team delivery system will address the full range of student learning, behavior, social, and health problems in the general education program as well as for students determined to be in need of special education programs and services.

## **PROPOSED USE OF \$21,431,960 AMERICAN RESCUE PLAN ESSER III**

### **Coordinate Emergency Response**

- ☐ Weekly COVID Screening test (\$2,125,760)
- ☐ Personal Protective Equipment Supplies for new facility- (\$9,600)

### **Educational Technology**

- ☐ Internet Connectivity - (\$720,000)
- ☐ Technology Support Services – (\$1,009,800)
- ☐ PowerSchool Unified Insights – Predictive Analytics – (\$418,260)  
Unified Insights brings together data at the district, school, classroom, and student level to track performance, guide differentiation, steer interventions, and inform essential professional development. Dashboards tailored to teachers, interventionists, instructional coaches, administrators, guidance personnel, and counseling staff provide up-to-date attendance, academic, and mental health data and analytics.

## **PROPOSED USE OF \$21,431,960 AMERICAN RESCUE PLAN ESSER III**

### **School Facility Improvement**

Univentilator Replacement and Ventilation Upgrade - \$ 6,582,506

☐ Toussaint L'Ouverture- Marquis de Lafayette School No. 6 (\$2,982,885)

☐ Hamilton Preparatory Academy (\$2,396,982)

☐ Mabel G. Holmes (\$1,202,639)

☐ Portable Air Purifiers – New Facility (\$15,000)

☐ Bipolar Ionization Air Purifiers – Gymnasium and Cafeteria - New Facility (\$160,000)

### **Ensure Preparedness and Coordination**

☐ Facial Recognition Temperature Reader – New Facility (\$1,200)

# PROPOSED USE OF \$3,126,988

## ACCELERATED LEARNING COACHING AND EDUCATOR SUPPORT GRANT

### ☐ AVID Professional Development (\$750,000)

AVID PD will be expanded to include three additional sites and continue with site professional development in AVID pathways. AVID is a college readiness system designed to increase the number of students who enroll and succeed in college. AVID has proven time and again that when given resources and tools for academic rigor and support, virtually all students can be academically successful. AVID's vision is to provide elementary through high school a system of support with a focus on success for all students within a rigorous academic setting.

### ☐ Orton Gillingham Pk-3 Training (\$277,310)

PK-3 teachers will be trained in the Orton Gillingham (OG) program that educates and engages teachers on Structured Literacy, enabling them to impact reading abilities of all students through its innovative classroom instruction based on the Science of Reading. OG trainings will provide educators with skills needed to integrate research-based, explicit, systematic, and multi-sensory instruction into their practice.

### ☐ Carnegie Learning Professional Development Math Teacher Academies K-12 (\$1,120,000)

This program will provide content support to teachers in preparation for teaching and learning.

PROPOSED USE OF \$3,126,988  
ACCELERATED LEARNING COACHING AND EDUCATOR SUPPORT GRANT

☐ Social Emotional Learning and Grief Professional Development and Parent workshops (\$19,678)

Individual Counseling Sessions will be provided for students before school/ during lunchtime or after school to provide needed assistance for pandemic related stress issues. Staff will also receive professional development in SEL strategies to work with struggling students and families.

☐ Rutgers Behavioral Health Support Services (\$360,000)

Rutgers University Behavioral Health Care will offer coordinated care services to work with schools' staff to engage in mental health PD.



PROPOSED USE OF \$3,126,988  
ACCELERATED LEARNING COACHING AND EDUCATOR SUPPORT GRANT

❑ Schools Transforming Reinventing Inclusive Diverse and Equitable Systems (STRIDES)  
(\$240,000)

Schools Transforming Reinventing Inclusive Diverse and Equitable Systems, Equity Rounds will provide PD through visiting classrooms, observing and reflecting on student learning and engagement. The process centers conversations about race and supports the improvement of instructional practices across the district.

❑ Conducting Equity Instructional Rounds (\$360,000)

Instructional practices that promote equity across classrooms and buildings. The process engages Building Equity teams, including teachers and students in professional learning through visiting classrooms and observing and reflecting on student learning and engagement. The process is valuable because it centers conversations about race and supports the continuous improvement of instructional practices across the district.

**PROPOSED USE OF \$213,193**  
**EVIDENCE-BASED SUMMER LEARNING AND ENRICHMENT ACTIVITIES**  
**GRANT**

❑ **Rising 9<sup>th</sup> Grade Transition Program (\$209,788)**

The Rising 9<sup>th</sup> Grade Transition program allocates resources to support and oversee the 9th-grade transition by creating opportunities for positive peer-led development and educating families about the importance of the 9th-grade transition. The students will benefit from an extended year program consisting of four weeks. Students will be offered a credit-bearing course in addition to a mentorship with peers at the 9<sup>th</sup> grade academy where they will be enrolled.

**PROPOSED USE OF \$213,193**  
**EVIDENCE-BASED COMPREHENSIVE BEYOND THE SCHOOL DAY**  
**ACTIVITIES GRANT**

☐ **Academic Tutoring (\$213,193)**

The district will implement a tutoring program to address the needs of learning loss in early literacy development. This program will utilize the fundamentals of early literacy skills through the use of multi-sensory literacy instruction.

**PROPOSED** USE OF \$88,501  
MTSS MENTAL HEALTH SUPPORT STAFFING GRANT  
GRANT

- ❑ Expansion of the YES program available to all Grades 9-12 students to provide evening hours - (\$88,501)

Youth Enrichment Services provides individual, family and group therapy to students and their respective families.