



2021-2022 GUIDEBOOK

Guidelines, Resources, and Best Practices for the Elizabeth Public
Schools Return to School Plan

REVISED January 15, 2022



MESSAGE

FROM THE SUPERINTENDENT

January 15, 2022

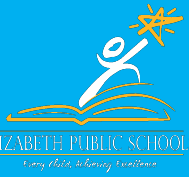
Dear Elizabeth Public Schools Learning Community,

As we prepare for the reopening of schools to in-person learning on Tuesday, January 18, please be advised that there have been several guideline updates as it pertains to exposure to COVID-19, quarantining, and wearing masks. In our commitment to provide the safest learning environment possible for all students and team members, we wanted to share these guidelines with you to provide a better understanding of the protocols that our district will be observing in accordance with the New Jersey Department of Education (NJDOE). In recent days and weeks, the NJDOE has updated its guidelines in accordance with CDC recommendations and will continue to do so as information is gathered, analyzed, and assessed. It is important that we remain flexible as these guidelines are dictated by conditions that have changed repeatedly and rapidly. The 2021-2022 Guidebook has been updated based on the guidelines that have been put in place by the NJDOE.

It is our goal to continue to provide students with the in-person education they deserve that best addresses their academic, social, and emotional needs and development. Our best chance of succeeding in this effort is working together and observing these guidelines to keep our students, team members, and families as safe as possible.

I look forward to welcoming our students and team members back on Tuesday, January 18 and encourage everyone to continue doing their best to take the necessary steps as individuals and as a community to help protect one another and keep each other safe and well. Thank you as always for your continued support and understanding.

Olga Hugelmeyer
Superintendent



THE RETURN TO SCHOOL

AN OVERVIEW

We recognize the importance of returning students to our schools for in-person instruction, as well as the overarching need to protect the health and safety of our students and team members. We expect that COVID-19 will be present, to some degree, in our community throughout the school year. Our district is prepared to respond in the event that we experience a COVID-19 exposure.

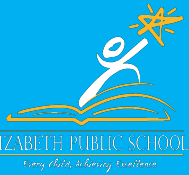
Education, just like healthcare and food provision, is essential to our community, and as such, the return to of our schools for in-person instruction with strict safety protocols will be prioritized.

The safety of our team members is also a critical priority in the return to school guidance and decisions. We have highlighted key staff safety measures in a standalone section that summarizes safety measures set forth throughout this document to protect staff and students.

OUR PLEDGE

Returning to
Schools
Responsibly





GUIDING PRINCIPLES

FOR A SAFE RETURN TO SCHOOLS

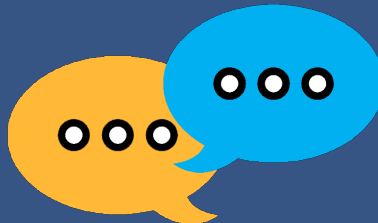
THESE CORE VALUES HAVE GUIDED THE WORK OF THE ELIZABETH BOARD OF EDUCATION, EPS SUPERINTENDENT, ADMINISTRATORS, AND TEACHERS TO ENSURE A SAFE RETURN TO SCHOOL IN THE 2021-22 SCHOOL YEAR FOR EACH AND EVERY STUDENT:



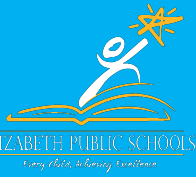
**EXCEED MINIMUM EXPECTATIONS
TO PLACE HEALTH AND SAFETY
FIRST FOR OUR STUDENTS AND
TEAM MEMBERS**



**PROVIDE HIGH-QUALITY
INSTRUCTION TO ALL
STUDENTS**



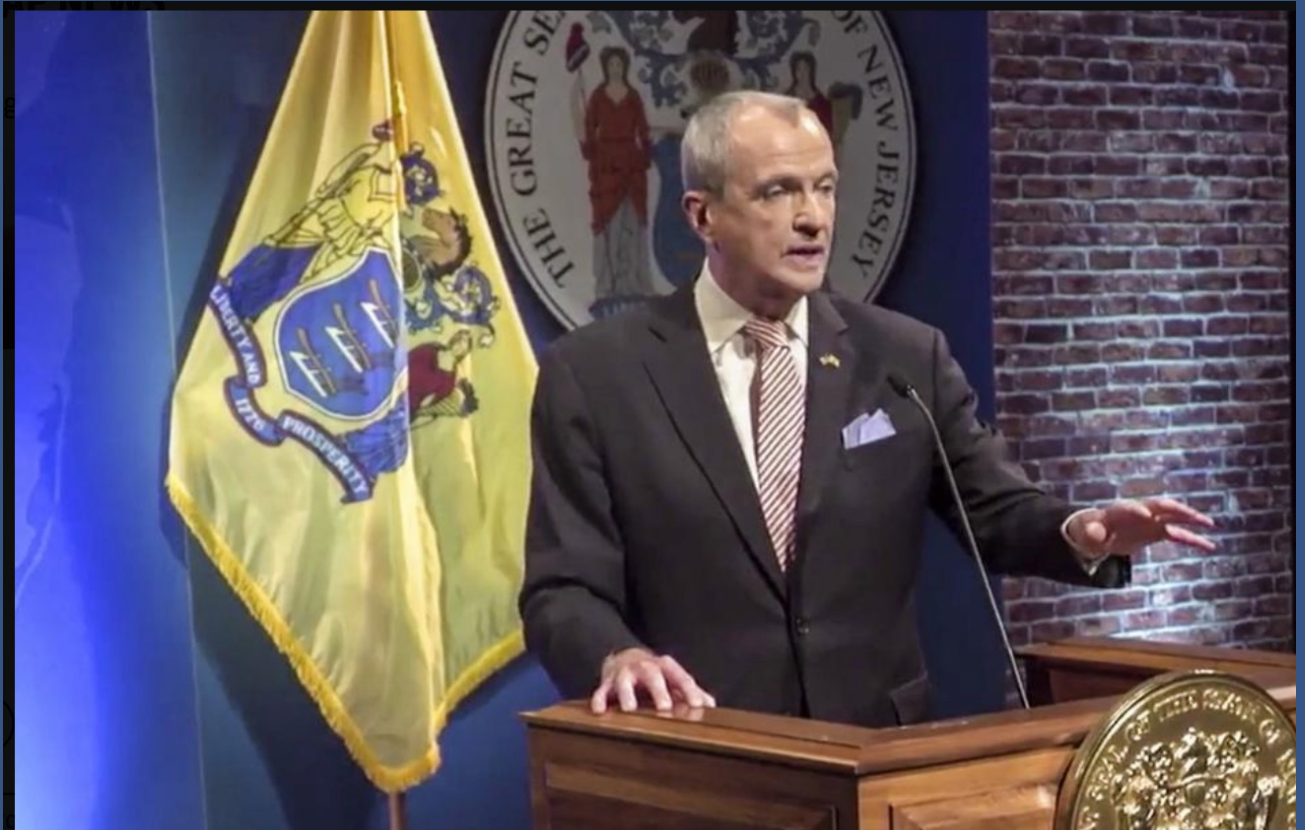
**DELIVER ACCURATE AND TIMELY
COMMUNICATION TO TEAM
MEMBERS AND FAMILIES AS
NEEDED AND KEEP ALL
STAKEHOLDERS INFORMED
THROUGHOUT THE SCHOOL YEAR**



MESSAGE

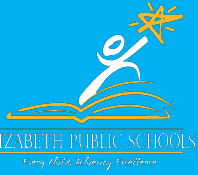
FROM THE SUPERINTENDENT

January 11, 2022



"Among other things keeping our schools open is critically important our kids learn better when they're in their regular classrooms, our educators are more effective when they are before a classroom - virtual learning is no replacement for in person education. I don't believe there's any argument against this" stated Murphy.

"Because we must keep our kids learning in person I want to be clear with by the way with no joy with no joy again with no joy that the mask mandates in schools and daycare centers will continue at least for the foreseeable future. These requirements again give us no joy, but they are only responsible course of action at this time."



MESSAGE

FROM THE SUPERINTENDENT



**Mayor J. Christian Bollwage
The City of Elizabeth, and
The Department of Health and Human Services
Presents:**

COVID-19 TESTING

Monday-Friday 9AM-5PM

Saturday 10AM-3PM

STEPHEN SAMPSON CENTER

**800 Anna Street
Elizabeth, NJ**

**Health Insured Individuals Please Bring:
Insurance Information & Photo ID
Uninsured Individuals: Photo ID
No out of pocket cost to participants**

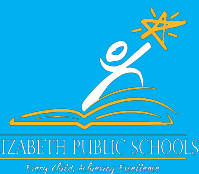
Register online at: testnj.online

**Accepting Walk-Ins January 10-15TH
BY APPOINTMENT ONLY Starting January 18, 2022**

**PLEASE NOTE:
All participants must wear masks.
Testing is taking place indoors
This is not a drive-thru testing site
We do not have rapid test**

Or scan this barcode:





MESSAGE

FROM THE SUPERINTENDENT

Covid-19 TESTING RESOURCE GUIDE

Berts Pharmacy

601 Elizabeth Ave #A
Elizabeth, NJ 07206
908-351-0644

FEES MAY APPLY

Monday-Friday 10:00am-6:00pm

Camacho Pharmacy

509 Elizabeth Ave
Elizabeth, NJ 07206
908-355-1784

FEES MAY APPLY*call for details

Walk ins welcome

Colton's Pharmacy

851 Elizabeth Ave
Elizabeth, NJ 07201
908-353-8200

ID AND PROOF OF ADDRESS

Walk ins welcome

Monday-Friday 10:30am- 4:00pm

Children 11am-3:00pm

Covid Clinic Mobile Van

651 Kapkowski Rd.
Elizabeth, NJ 07206
877-219-8378

FEES MAY APPLY

Need appointment

Monday-Saturday 10:00am-3:30pm

CVS Pharmacy

430 Westfield Ave
Elizabeth, NJ 07208
908-351-7911

Insurance optional

Need appointment

High Touch Pharmacy

344 W Grand Street
Elizabeth, NJ 07202
908-353-2000

PCR TEST FREE WITH OR WITHOUT INSURANCE

FEE FOR RAPID PCR

Appointment Only

Monday-Friday 10:00am-3:30pm

Saturday 10:00am-3:30pm

Kean University

1000 Morris Ave
Union, NJ 07083
908-737-5326

INSURANCE OPTIONAL

Need appointment

Take Care Pharmacy

182 A Elmora Ave
Elizabeth, NJ 07202
(908) 351-5768

FREE WITH INSURANCE

FEES MAY APPLY FOR UNINSURED

The Extra Supermarket Pharmacy

838 E Grand St.
Elizabeth, NJ 07201
908-662-0057

INSURANCE OPTIONAL

Walk ins welcome

Photo ID



NJDOH GUIDANCE ISSUED ON JANUARY 12, 2022



STATE OF NEW JERSEY
DEPARTMENT OF HEALTH



PO Box 360
Trenton, NJ 08625-0360

Judith M. Persichilli
Commissioner

For Release:
January 12, 2022

For Further Information Contact:
Office of Communications
(609) 984-7160

New Jersey Department of Health Releases Updated Recommendations for K-12 Schools

Measures Focus on Isolation and Quarantine, Areas of Very High COVID-19 Transmission

TRENTON - Today, The New Jersey Department of Health (NJDOH) has released [updated guidance](#) for K-12 schools which includes updated school exclusion criteria to reflect CDC's recent reduction in isolation and quarantine timelines. This guidance also includes recommendations for additional measures schools can implement in regions with very-high COVID-19 community transmission, which were shared with schools on December 30, 2020.

NJDOH's guidance on isolation and quarantine follows the federal Centers for Disease Control and Prevention's (CDC) [guidance](#). The shortened timeframes for isolation and quarantine focus on the period when a person is most infectious, followed by continued masking for an additional five days.

The updated recommendations for when schools are in regions with very high COVID-19 community transmission (red on the [COVID-19 Activity Level Report \(CALI\) map](#)) support in-person instruction by adding additional precautions for extracurricular activities that pose challenges for appropriate physical distancing and masking. This document does not apply to childcare settings.

"We know that students benefit from in-person learning, and safely continuing in-person instruction remains a priority," said Health Commissioner Judith Persichilli. "These recommendations will help local health departments and schools in handling COVID-19 cases and exposures among students and staff to ensure healthy outcomes for all."

COVID-19 Home Isolation Guidance Flow Chart

Revised January 7, 2022 — Additional updates may occur as CDC formalizes its latest guidance.



Centers for Disease
Control and Prevention

START

Do you have **symptoms**¹
consistent with COVID-19,
and/or have you tested **POSITIVE**
for COVID-19?

1. Symptoms of COVID-19 can range from mild to severe illness, may appear 2 to 14 days after exposure, and may include:

- Congestion or runny nose
- Cough
- Muscle or body aches
- New loss of taste or smell
- Sore throat
- Fever or chills
- Nausea or vomiting, diarrhea
- Headache
- Shortness of breath or difficulty breathing
- Fatigue (not as sole symptom in school setting)

YES, I have symptoms¹

but
NO, I am UNTESTED,
or NO, I am awaiting my test result
Get tested if you have not already
and follow the **POSITIVE** guideline at
left until you know your result,
then re-evaluate.

YES, I have symptoms¹

but
NO, I tested NEGATIVE
ISOLATE until you have been
fever-free (without the use of
fever-reducing medication)
for **at least 24 hours** and your
other symptoms are improving.

NO, I do not have symptoms¹

and
NO, I am UNTESTED,
or NO, I am awaiting my test result,
or NO, I tested NEGATIVE
No isolation needed.
Re-evaluate if symptoms appear.

NO, I do not have symptoms¹
but
YES, I tested POSITIVE

ISOLATE until it has been
at least 5 full days since your
positive test sample was taken.
You may leave isolation after at least
5 days if you **wear a mask** around
others until it has been **10 days** since
your positive test sample was taken.
During this time, you should avoid
situations where a mask cannot
be worn (e.g., while eating in a
restaurant), exposure to high-risk
populations, and travel.
Re-evaluate if symptoms appear
during this time.¹

YES, I have symptoms¹
and
YES, I tested POSITIVE

ISOLATE until it has been
at least 5 full days since your
symptoms appeared **and** until you
have been fever-free for **at least 24**
hours (without the use of fever-
reducing medication) **and** your other
symptoms are improving.
You may leave isolation after at least
5 days if you **wear a mask** around
others until it has been **10 days** since
your symptoms appeared. During
this time, you should avoid situations
where a mask cannot be worn
(e.g., while eating in a restaurant),
exposure to high-risk populations,
and travel.

SPECIAL EXCEPTIONS FOR PEOPLE IN ISOLATION

- 1. People who are unable to mask** should **ISOLATE** for **at least 10 full days** from the time symptoms appeared (or when positive test sample was taken, if asymptomatic, and re-evaluate if symptoms appear¹).
- 2. People in high-risk settings** (including healthcare patients, LTCF residents, homeless shelter clients, and correctional facility inmates/detainees) should **ISOLATE** for **at least 10 full days** from the time symptoms appeared (or when positive test sample was taken, if asymptomatic, and re-evaluate if symptoms appear¹).
- 3. People who are severely immunocompromised** need to **ISOLATE** for **at least 10 full days**. In consultation with their healthcare provider, they may need to **ISOLATE** for up to 20 days and be tested before being around others.
- 4. People who are severely ill from COVID-19** including those hospitalized, admitted to the ICU, or who required ventilation need to **ISOLATE** for **at least 10 full days**. In consultation with their healthcare provider, they may need to **ISOLATE** for up to 20 days and be tested before being around others.
- 6. Healthcare personnel** who are returning to work from **ISOLATION** should consult CDC's **Interim Guidance for Managing Healthcare Personnel** at: <https://www.cdc.gov/coronavirus/2019-ncov/hcp/guidance-risk-assessment-hcp.html>

SPECIAL EXCEPTION

Close Contacts²

If you were exposed to someone
with COVID-19, you may be
subject to **QUARANTINE**.
See the guideline at



Centers for Disease
Control and Prevention

2. Close Contacts are people who were **within 6 feet** of a person with COVID-19 while infectious for a **cumulative total of 15 minutes or more over a 24-hour period**, regardless of whether masks were worn. [Exception: in the K-12 setting, a student who was within 3-6 feet of an infected student is not considered a close contact if both students were engaged in consistent and correct use of well-fitting masks at all times. This exception does not apply to teachers, staff or other adults in the classroom setting.]

COVID-19 Home Quarantine Guidance Flow Chart

Revised January 7, 2022 — Additional updates may occur as CDC formalizes its latest guidance.

START
Do you have any symptoms consistent with COVID-19¹
or have you tested POSITIVE for COVID-19?

1. Symptoms of COVID-19 can range from mild to severe illness, may appear 2 to 14 days after exposure, and may include:

- | | | |
|---|---|-----------------------------|
| Cough | Shortness of breath or difficulty breathing | New loss of taste or smell. |
| Fever or chills | Muscle or body aches | Headache |
| Nausea or vomiting, diarrhea | Sore throat | Congestion or runny nose |
| Fatigue (not as sole symptom in school setting) | | |

**YES, I have symptoms¹
or tested POSITIVE.**

You are subject to ISOLATION. See the guideline at:
www.Maricopa.gov/COVIDisolation

NO, I have no symptoms.¹
Are you a close-contact²
of someone with COVID-19?

2. Close Contacts are people who were within 6 feet of a person with COVID-19 while infectious for a cumulative total of 15 minutes or more over a 24-hour period, regardless of whether masks were worn. [Exception: in the K-12 setting, a student who was within 3-6 feet of an infected student is not considered a close contact if both students were engaged in consistent and correct use of well-fitting masks at all times. This exception does not apply to teachers, staff or other adults in the classroom setting.]

3. Previous COVID-19 infection means you previously tested positive for COVID-19 by PCR or antigen test, have recovered, and completed your isolation period within the last 90 days.

YES, I am a close-contact.²
Did you have and recover from COVID-19
in the past 90 days?³

NO, I am not a close-contact.²
No quarantine necessary.
Re-evaluate if you are exposed later to someone with
COVID-19 or if symptoms appear.

4. Up-to-Date with COVID Vaccinations means a person has completed all recommended COVID-19 vaccines that they are eligible to receive. As of 1/6/22, a person is Up-to-Date with their COVID vaccinations if they are:

- 18 years of age or older and have completed a Primary Series and received a Booster dose when eligible.
- 5-17 years of age and have completed a Primary Series of COVID vaccine.

Is your Primary Series of COVID vaccinations complete? For most people, you've completed a Primary Series if you have received any of the following:

- One (1) dose of the J&J vaccine, **or**
- Two (2) doses of the Moderna vaccine separated by at least 28 days, **or**
- Two (2) doses of the Pfizer vaccine separated by at least 21 days.

For people who are **moderately or severely immunocompromised**, the Primary Series includes either:

- One dose of the J&J vaccine, **or**
- Two doses of the Moderna or Pfizer vaccines as described above plus an additional third dose of Moderna or Pfizer at least 28 days later.

Note: children ages 0-4 are **not** eligible for **any** COVID vaccination at this time.

Have you been Boosted? You have been **Boosted** if you completed your **Primary Series** (described above) **and** received an additional dose of a COVID vaccine (Pfizer and Moderna are preferred in most situations). Timing of the Booster dose depends on which vaccine you received for your Primary Series. If yours was with:

- **J&J vaccine** - the Booster should have been received at least 2 months after the last dose of J&J in your primary series.
- **Moderna vaccines** - the Booster should have been received at least 5 months after the last dose of Moderna in your primary series.
- **Pfizer vaccines** - the Booster should have been received at least 5 months after the last dose of Pfizer in your primary series.

Note: children ages 12-17 may receive **only** the Pfizer vaccine as a Booster. Children ages 5-11 are **not** eligible for a Booster dose at this time.

**YES, I had and recovered from COVID-19
in the past 90 days.³**

No quarantine necessary.
Wear a mask around others until it has been 10 full days
since your last exposure. Re-evaluate if symptoms appear.

NO, I have not had COVID-19 in the past 90 days.³
Are you Up-to-Date with **all** recommended COVID vaccinations
based on your age and medical conditions?⁴

YES, I'm Up-to-Date.⁴
No quarantine necessary.
Wear a mask around others until it has been 10 full days
since your last exposure.⁵ Re-evaluate if test result is positive
or if symptoms appear.

NO, I'm not Up-to-Date.⁴
QUARANTINE for at least 5 days
after your last exposure, **then get tested on or after day 5⁵**
Did you get a PCR or Antigen test for COVID-19⁶
and do you know your result?

5. Long Term Care Facilities should follow CMS/MCDPH testing guidance for exposed residents.

6. PCR or Antigen tests for COVID-19 generally require a nose or throat swab or saliva sample. If you received a **blood** test, this was not a PCR or Antigen test, and you should follow the instructions for "NO, I am untested" at right.

**NO, I am untested,
or YES, awaiting result,
or YES, NEGATIVE result**
Are you able to wear a mask
for 5 more days when around others?

YES, POSITIVE result.
You are subject to ISOLATION.
See the guideline at:
www.Maricopa.gov/COVIDisolation

YES, I am able to wear a mask.
QUARANTINE may end 5 days following your last exposure.
Continue to wear a mask around others until it has been
10 full days since your last exposure.
Re-evaluate if you test POSITIVE or symptoms appear.

NO, I am unable to wear a mask.
Continue QUARANTINE until it has been
10 full days since your last exposure. [You may end quarantine
after 7 full days if you test negative between days 5-7.]
Re-evaluate if you test POSITIVE or symptoms appear.

COVID-19 PROTOCOL & NOTIFICATION

Scenario	Immediate Actions	Communication
<p>Scenario 1: A student or staff member either exhibits COVID-19 symptoms or has a temperature of 100.4 or above or is exhibiting symptoms.</p>	<ul style="list-style-type: none"> • Student who have COVID-19 symptoms should be tested for COVID-19 on Day 5. • Quarantine for 5 days. If symptoms persist quarantine is extended an additional 5 days. • If the symptoms have improved and are fever-free by the end of Day 5, the student can return to work on Day 6. • Students/staff need to wear masks outdoors, including during outdoor physical education classes or school sports on Days 6-10 after completing a 5-day isolation or quarantine. 	<p>Parent provides the COVID test results to the principal and school nurse.</p>
<p>Scenario 2: A family member or someone in close contact with a student or staff member (outside the school community) tests positive for COVID-19</p>	<ul style="list-style-type: none"> • Student/staff stays home • School administration notified Student/staff instructed to get tested around day 5 after exposure to COVID • Unvaccinated Student/staff instructed to quarantine, even if they test negative, for a full 5 days after date of last exposure to COVID-19 case • All of the children in the home must quarantine for 5 days and if unvaccinated test on Day 5. • Classroom remains open • If student/staff tests positive during quarantine, see Scenario 3 below 	<p>Parent notifies principal and school nurse of family member with COVID.</p> <p>OR</p> <p><u>For Classroom Settings:</u> Letter to Student/Staff Member who is a Close Contact of a COVID-19 Case</p> <p>AND</p> <p>Letter to Student/Staff Member in Classroom</p>
<p>Scenario 3: A student or staff member tests positive for COVID-19.</p>	<ul style="list-style-type: none"> • Student/staff sent home if not already quarantined • School administration notified • Public Health Department notified • Student/staff instructed to isolate for 5 days, if symptoms continue isolate for additional 5 days. • Unvaccinated School-based close contacts identified and instructed to quarantine for 5 days and test on Day 5. • If there are three positive cases in the class, classroom closes. 	<p><u>For Classroom Settings:</u> Letter to the Student/Staff Member Who is a COVID-19 Case</p> <p>AND</p> <p>Letter to Student/Staff Member in classroom.</p>



COVID-19 PROTOCOL & NOTIFICATION

Scenario	Immediate Actions	Communication
A vaccinated student or staff member tests negative for COVID-19 (No symptoms)	<ul style="list-style-type: none"> Student/staff may return to school 	Student family/staff to bring evidence of negative COVID-19 test or medical note if testing not performed
A vaccinated student or staff member had COVID in last 90 days.	<ul style="list-style-type: none"> Student/staff member does not need to quarantine if exposed. 	Student family/staff to bring evidence of COVID-19 test or medical note with date of COVID positive case in order to ensure 90-day period.
A student or staff member is medically fragile and is experiencing symptoms	<ul style="list-style-type: none"> Student/staff must remain in quarantine for a full 10 days after date of last exposure to COVID-19 case. Test on Day 5 	Student family/staff to bring evidence of COVID-19 test or medical note if testing not performed.



COVID-19 PROTOCOL & NOTIFICATION

Isolation and Quarantine Guidelines

Virtual Learning for Students

Remote learning is available for the following students:






Students who are isolating or quarantining because of exposure to COVID- 19



EXCLUSION FROM SCHOOL

Parents should not send students to school when sick. NJDOH recommends that students with the following symptoms be promptly isolated from others and excluded from school:

Parents/Guardians or staff members who answer “Yes” to any one of these questions needs to contact the school administrator, school nurse and your physician

<p>1. Has your child experienced two of more of the following symptoms?</p> <p>Fever, chills, muscle aches, headache, sore throat, nausea or vomiting, diarrhea, fatigue, congestion, or runny nose;</p>	<p><u>NO</u></p> 	<p><u>YES</u></p> <p>STAY HOME and seek medical care</p>
<p>2. Has your child experienced ONE of the following symptoms?</p> <p>Cough, shortness of breath, difficulty breathing, new loss of smell or new taste disorder.</p>	<p><u>NO</u></p> 	<p><u>YES</u></p> <p>STAY HOME and seek medical care</p>
<p>3. Within the past 10 days, have you had close contact with someone who has been confirmed as having COVID-19?</p>	<p><u>NO</u></p> 	<p><u>YES</u></p> <p>STAY HOME and seek medical care and testing</p>
<p>4. Has someone in your household been diagnosed with COVID-19? Quarantine if you have been in close contact with someone who has COVID-19, unless you have been fully vaccinated. Unvaccinated must quarantine and get tested 5 days after exposure.</p>	<p><u>NO</u></p> 	<p><u>YES</u></p> <p>STAY HOME and seek medical care and testing</p>
<p>5. Have you traveled internationally? Vaccinated travelers have to get tested with a viral test 3-5 days after travel. Unvaccinated travelers Get tested with a viral test 3-5 days after travel AND stay home and self-quarantine for a full 5 days after travel.</p>	<p><u>NO</u></p> 	<p><u>YES</u></p> <p>STAY HOME Contact the school nurse and your physician</p>

PERSONAL PROTECTIVE EQUIPMENT AND PROTOCOLS

WHAT TO EXPECT WHEN RETURNING TO SCHOOL

- We have developed routines to ensure students wash their hands or use hand sanitizer upon arrival to campus; after using the restroom; after playing outside and returning to the classroom
- We have posted signage in high visibility areas to remind students and staff of proper techniques for handwashing and covering of coughs and sneezes and other prevention measures
- We have ensured adequate supplies to support healthy hygiene behaviors, including soap, tissues, face coverings and hand sanitizers (with at least 60 percent ethyl alcohol) for staff and students who can safely use hand sanitizer
- We have suspended use of drinking fountains. We are encouraging the use of reusable water bottles. Refillable water fountains are being installed.
- We have minimized the sharing of supplies and equipment among staff and students to the extent feasible. When items must be shared, clean and disinfect items between uses



HAND HYGIENE

PHYSICAL DISTANCING



3 FEET

WHENEVER POSSIBLE



GENERAL

- We will train students on protocols for physical distancing for both indoor and outdoor spaces
- All schools and offices have signage reminding students and team members about physical distancing in prominent locations throughout each school
- Visitors to our schools must be vaccinated.



PERSONAL PROTECTIVE EQUIPMENT AND PROTOCOLS

WHAT TO EXPECT WHEN RETURNING TO SCHOOL

PHYSICAL DISTANCING (cont.)

HIGH SCHOOL

- Student desks will be spaced at least three feet apart

ALL SCHOOLS

- Class sizes are as small as practicable
- Teacher and staff desks will be distanced at least six feet away from students' desks to minimize the risk of adult-to-child disease transmission.
- Ventilation has been increased by increasing outdoor air circulation (e.g., by opening any operable windows), using air purifiers and increasing ventilation rates whenever possible.
- We have reduced the amount of furniture and equipment in the classroom to facilitate distancing and reduce high-touch surfaces.
- Our student desks should be faced in the same direction (and not facing each other) to minimize risk of disease transmission.
- We have ensured adequate supplies to minimize sharing of high-touch materials (art supplies, equipment, electronic devices, etc.) to the extent practicable, or limit use of supplies and equipment to one group of students at a time and clean and disinfect between uses.
- Keep students' belongings separate so that students do not come in contact with other students' belongings. Students will be required to carry their instructional materials/laptop in their backpack. There will be no access to lockers to avoid students congregating.

NON-CLASSROOM SETTINGS

Restrooms: Stagger restroom use by groups of students to the extent practicable, and/or assign certain groups of students to use certain restrooms.

Physical Education:

- We are conducting activities outdoors whenever possible, with appropriate physical distancing within cohorts to the extent practicable.
- We are going to limit use of shared playground equipment in favor of physical activities that require less contact with surfaces and allow for greater physical distancing.
- Cloth face coverings must be worn during indoor/outdoor physical conditioning and training or physical education classes. Students should take a break from exercise if any difficulty in breathing is noted and should change their face covering if it becomes wet and sticks to the student's face and obstructs breathing.
- Physical Education teachers will carry first aid kits that include handsanitizer, face coverings, and gloves.

PERSONAL PROTECTIVE EQUIPMENT AND PROTOCOLS

WHAT TO EXPECT WHEN RETURNING TO SCHOOL

REQUIREMENTS

Teachers and Staff

- All adults must wear a face covering **at all times** while at school.
- Staff who are unable to wear a face covering for medical reasons shall not be assigned duties that require close contact with students or other staff.

Students

- All students are required to wear face coverings:
 - while arriving and departing from school;
 - in any area inside and outside of the classroom
 - while waiting for or riding on a school bus.
- Students excluded from face covering requirements include: students with special needs who are unable to tolerate a face covering.
- We have posted signage in high visibility areas to remind students and staff of (1) when and where face coverings are required and (2) appropriate use of face coverings.
- We will provide face coverings for students and staff who lose their face coverings or forget to bring them to school.
- Teachers and other staff may consider using face shields in combination with face coverings when in the classroom to further reduce the risk of transmission.
- Teachers may consider using face coverings with clear windows during phonological instruction, or a face shield with an appropriate seal (cloth covering extending from the bottom edge of the shield and tucked into the shirt collar), to enable students to see the teacher's mouth and in settings where a face covering poses a barrier to communicating with a student who is hearing impaired or a student with a disability.

FACE COVERINGS





PERSONAL PROTECTIVE EQUIPMENT AND PROTOCOLS

WHAT TO EXPECT WHEN RETURNING TO SCHOOL

ADDITIONAL SAFETY MEASURES FOR TEACHERS AND OTHER STAFF

REQUIREMENTS

- We are limiting visitors to all schools, thereby maximizing physical distancing among staff and between staff and students.
- All students and staff are screened for symptoms daily.

School Events

- For all schools:
 - Field trips, assemblies, and other gatherings are not permitted at this time.
 - We are maximizing the number of school events that can be held virtually or outside.

Equipment for front office staff

- We have installed physical barriers, such as a clear plastic barrier, in the school's front office to separate staff from visitors and volunteers.
- Teachers and other staff with close contact with students may consider wearing face shields in addition to wearing face coverings.

Personal protective equipment (PPE) for special education instructors and aides and healthcare personnel

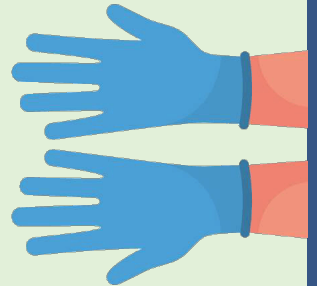
- A mask and face shield is recommended when providing services to students which requires repeated close contact interactions (e.g., assistance with activities of daily living) or conducting health assessments (including vision and hearing screening).
- Gloves and any additional PPE should be worn as recommended for procedures which require universal precautions (e.g., toileting assistance, catheterization, and insulin administration). PPE for potential aerosol generating procedures (e.g., suctioning of tracheostomy sites and nebulizer treatments) should follow CDC guideline.



PERSONAL PROTECTIVE EQUIPMENT AND PROTOCOLS

WHAT TO EXPECT WHEN RETURNING TO SCHOOL

- We have provided adequate training and personal protective equipment to protect custodial staff who clean and disinfect areas used by any sick person. To reduce risk of exposure, we are required to wait 24 hours before cleaning and disinfecting.
- Students and staff are required to get tested after they develop one or more COVID-19 symptoms or if one of their household members or non-household close contacts tested positive for COVID-19.
- A classroom will be closed for 48 hours after a student or staff member in that classroom tests positive for COVID-19.



MAINTENANCE & OPERATIONS

SAFETY EQUIPMENT

EPS is committed to securing additional safety equipment to maintain the cleanliness of buildings, including but not limited to:



HAND SANITIZING STATIONS

- Hand sanitizing stations will be located in common areas such as the security desk, front offices, and priority locations identified by the principal.



PERSONAL PROTECTIVE EQUIPMENT FOR STAFF

- All staff are required to wear fabric face coverings unless prevented due to health conditions or instructional/communication needs. In those instances, staff shall not be assigned duties that require close contact with students or other staff. Additional disposable masks are also available for students and staff who lose their face coverings or forget to bring them to school.



TOUCHLESS THERMOMETERS

- The district has provided each school and district site with touchless forehead thermometers so staff may screen each student, and themselves, as they enter.

ELECTROSTATIC SPRAYERS AND PORTABLE UV CLEANERS



- The district will provide electrostatic sprayers for every school
- The sprayers will enable custodial staff to more efficiently disinfect our schools. The units spray a fine mist of disinfectant solution that is statically charged and then adheres to the surfaces in the room ensuring coverage. Detailed attention will be given to high-touch areas such as door handles, desktops, sink handles, handrails and restrooms throughout the day.

OTHER CONSIDERATIONS

- At least daily, and more frequently clean and disinfect frequently touched hard surfaces (e.g., tables, desks, chairs, door handles, light switches, phones, copy/fax machines, bathroom surfaces (toilets, countertops, faucets) and playground equipment) and shared objects (toys, games, art supplies, books) pursuant to CDC guidance
- We are using cleaning products that are approved for use against COVID-19 on the Environmental Protection Agency (EPA)-approved list
- Drinking fountains have been suspended. Students should bring their own water bottles
- Bathrooms will be cleaned and stocked with soap throughout the day.
- Disinfecting wipes and/or disinfecting sprays will be provided in every classroom.
- HVAC systems have been serviced and inspected across the District to ensure proper operation and circulation of outside air.
- The district is upgrading from a 3-ply to a 4-ply filter, exceeding current requirements.
- HVAC schedules will be set to run at least one hour before and after occupied hours.

MAINTENANCE & OPERATIONS

VENTILATION SYSTEMS

All the ventilation systems will be checked for proper operation. The goal is to provide as much outdoor air as possible, prevent high ventilation rates that may spread the pathogen further from the human host and minimizing or diluting the recirculated air as much as possible. In order to achieve our goals we will:

- Increase the percentage of outdoor air as much as possible to dilute the recirculated air and minimize the recirculated air.
- Evaluate the use of filters with a higher MERV rating (increasing the level of filtration) when the equipment can handle it.
- Running the equipment always in occupied mode to provide more changes of air by when the students show up.
- Run the UVs at a slower speed to prevent/limit the projection of any possible pathogens in the air.
- Have additional filters at hand so that if necessary, do additional filter changes.
- Lower the setting of the systems controlled by a Carbon Dioxide On-Demand Sensor to force them to increase the amount of outdoor air.
- Evaluate the addition of needlepoint bipolar ionization devices to our HVAC equipment to inactivate/kill the virus in the air and improve our filtration of particles in suspension in the room air.

AIR PURIFIERS

All classrooms will be provided with air purifiers that have a HEPA filter. Most classrooms will be outfitted with two air purifiers that have a HEPA filter.



TRANSPORTATION

WHAT TO EXPECT WHEN RETURNING TO SCHOOL

- All families will need to screen students for COVID-19 symptoms before they board the school bus. Drivers will stand at the entrance to the bus during student loading to perform a temperature check with touchless thermometers. Students not meeting screening requirements will not be permitted to board the bus.
- We are ensuring at least six feet of distance between the bus/van driver and students when seated. We are using physical partitions or visual cues (e.g., floor decals, colored tape, or signs to indicate to students where they should not sit or stand near the bus operator).
- We are maximizing physical distancing between students on the bus by limiting available seats to the extent practicable (e.g., every other row available for seating).
- Students should practice physical distancing while waiting on buses at school bus stops. Students from the same family and/or the same classroom should be instructed to sit together whenever possible to minimize exposure to new contacts.

BOARDING & DISEMBARKING



DISINFECTION & CLEANING



- Buses are being thoroughly cleaned and disinfected daily and after transporting students with electrostatic sprayers.
- Bus Drivers are provided with disinfectant wipes and disposable gloves to support disinfection of frequently touched surfaces during the day.
- Drivers will perform disinfecting wipe down of high touch points following each run.
- Drivers have been directed to increase ventilation on buses/vans by opening any operable windows, to the greatest extent possible, unless doing so poses a safety or health risk for current or subsequent occupants.

FACE COVERINGS

- Due to the CDC requirements on buses, students and drivers will be required to wear face coverings.
- We are requiring bus drivers and students wear face coverings at all times while awaiting and riding on buses.
- We have provided bus drivers with extra face coverings for students who lose or forget to bring their face coverings.



COVID-19 PROTOCOL & NOTIFICATION

COVID-19 Testing and Reporting

REQUIREMENTS

Indications for testing:

- We require students and staff to get tested after they develop two or more COVID-19 symptoms or if one of their household members or non-household close contacts tested positive for COVID-19

Positive test results:

- Parents/guardians and staff are required to notify school administration immediately if the student or staff tested positive for COVID-19 or if one of their household members or non-household close contacts tested positive for COVID-19.
- Upon receiving notification that staff or a student has tested positive for COVID-19 or been in close contact with a COVID-19 case, student or staff member must self-quarantine for 10 days.
- Students/staff who test positive and have completed isolation requirements do not require a medical note or a negative test prior to returning to school/work.

Negative test results:

- Symptomatic individuals who are not close contacts and who test negative for COVID-19 can return to in-person school/work after at least 72 hours from fever resolution (if any) and improvement in other symptoms.
- Close contacts to a COVID-19 case who test negative can return to in-person school/work only after completion of 10 days of quarantine from last exposure.
- Documentation of negative test results must be provided to school administration





STAY CONNECTED

TO ELIZABETH PUBLIC SCHOOLS



You can find

Elizabeth Public Schools

in the app store.



COME VISIT US



Come visit our
district website at
www.epsnj.org



500 North Broad Street
Elizabeth, NJ



908.436.5000

FOLLOW EPS ON SOCIAL MEDIA

